

# Monochrome Glazed Earthenware Catalogue

## Monochrome Glazed Vessels (M. Müller-Wiener)

### Cat. No. ME1

HNM 01.43.86  
Jar, Khorasan, 10<sup>th</sup>-12<sup>th</sup> CE  
Earthenware (buff); wheelmade  
Treatment o/s: slip, transparent glaze (red, green)  
Size (cm): h. 8.7; d. 9.5



Heavily potted small jar with a globular body and short vertical neck. Low ring base. Green glaze covers the outer surface, base is unglazed. Large drops of glaze near the base indicate a flux-rich alkaline glaze. Inside unglazed. String-cut base.

### Cat. No. ME2

HNM 03.27.86c  
Ewer, Khorasan, 10<sup>th</sup>-13<sup>th</sup> CE (?)  
Earthenware (orange); fine fabric; wheelmade; glaze flakes off



Treatment o/s: transparent glaze (dark green)  
Size (cm): w. 8.7; d. (base) 3.8  
Fragment of pear-shaped ewer, neck and handle missing. Low, flat base. Large drops of glaze near the base indicate a flux-rich alkaline glaze.

### Cat. No. ME3

HNM 03.27.86d  
Ewer, Khorasan, 10<sup>th</sup>-12<sup>th</sup> CE (?)



Earthenware (buff); fine fabric; wheelmade  
Treatment o/s: wash, transparent glaze (green)  
Decoration o/s: impressed

Size (cm): h. 13.5; w. 10.5; d. (base) 5.5  
Pear-shaped ewer. Neck and handle missing. Fragmented handle from another object attached to the joint of the original handle; this secondary attachment consists of stone-paste. Low base, slightly concave. Glaze inside and outside, base unglazed. A band of vertically impressed hatches decorates the shoulder.

### Cat. No. ME4

HNM 03.28.86e  
Jar, Khorasan (?), 7<sup>th</sup>-12<sup>th</sup> CE (?)  
Earthenware (buff); wheelmade  
Treatment o/s: transparent glaze (turquoise)  
Size (cm): h. 20.7; w. 16.8; d. (rim) 9.4; d. (base) 7.6



Medium-sized jar with piriform body. Low, cylindrical neck and everted rim. Three vertical handles attached to the shoulder. Low, flat base. Clear marks of trimming on outer surface. Between the handles vertically placed bands of applied rosettes. Turquoise glaze covers the outer surface, except for the base.

The dating and attribution is unclear. The applied rosettes resemble the decoration found on the so-called Sasano-Islamic jars which were frequent in Iraq and neighbouring regions in the early Islamic period. The fabric of the vessel, however, is different and the shape and finishing of the unglazed base resemble the monochrome glazed earthenware vessels in the present catalogue.

### Cat. No. ME5

HNM 03.27.86f  
Trefoil-mouthed ewer, Khorasan, 10<sup>th</sup>-12<sup>th</sup> CE  
Earthenware (buff); fine fabric; wheelmade  
Treatment o/s: wash, transparent glaze (green)

Size (cm): h. 14.3; w. 9; d. (base) 5.3  
Small ewer with pear-shaped body. Low, flat base. Narrow, tubular neck, globular upper part, pinched. Vertical handle attached to the shoulder and below the rim; deep groove in the middle of the handle. Lower part of the body unglazed.



Cat. No. ME5

### Cat. No. ME6

HNM 03.27.86g, see Fig. 2  
Trefoil-mouthed ewer, Khorasan, 10<sup>th</sup>-12<sup>th</sup> CE  
Earthenware (buff); fine fabric; wheelmade  
Treatment o/s: slip, transparent glaze (red, green)

Size (cm): h. 15.4; w. 9.4; d. (base) 5.4  
Small ewer with pear-shaped body. Short tubular neck; globular upper part, pinched. Vertical handle attached to the shoulder and below the rim. Low, flat base. Clear marks of trimming on outer surface. Lower part of body left unglazed. A layer of very brilliant, transparent, green glaze covers two-thirds of the entire body.

For similar ewers in fritware see Franke, Monochrome Fritware, this volume, cat. nos. MF16 and MF17 (HNM 03.28.86h; HNM 03.28.86i).

### Cat. No. ME7

HNM 03.27.86j, see Fig. 6  
Fragmented ewer, Khorasan, 12<sup>th</sup>-13<sup>th</sup> CE  
Earthenware (orange); wheelmade  
Treatment o/s: opaque glaze (turquoise)  
Decoration o/s: impressed

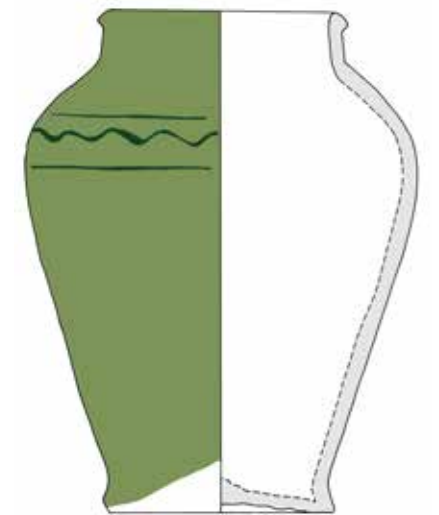
Size (cm): h. 16.8; w. 12.5; d. (base) 5  
Small ewer with globular body, narrow, tubular neck; rim and spout missing. Vertical handle, attached to the shoulder, immediately below the rim. Low, flat base. On the lower sides are aligned impressions (fingerprints). Green glaze covers most of the surface, except for the base.

### Cat. No. ME8

HNM 03.27.86k, see Fig. 4  
Ewer, Khorasan, 10<sup>th</sup>-12<sup>th</sup> CE  
Earthenware (buff); fine fabric; wheelmade  
Treatment i/s: transparent glaze (green)  
Size (cm): h. 18.1; w. 11.2

Small ewer with pear-shaped body. Tubular neck with high-rising spout. Handle attached to the shoulder and below the rim. Low, flat base. Green glaze covers the outer surface, base unglazed. The spout is also glazed on the inside.

For the fragment of a similar ewer in fritware see Franke, Monochrome Fritware, this volume, cat. no. MF18.



### Cat. No. ME9

HNM 03.27.86l  
Fragmented ewer, Khorasan (?), 10<sup>th</sup>-13<sup>th</sup> CE  
Earthenware (orange); wheelmade  
Treatment i/s: transparent glaze (colourless); o/s: transparent glaze (green)  
Size (cm): h. 16.8; w. 16; d. (base) 7.5



Fragment of a pear-shaped ewer. Neck and handle missing. Low, flat base. Clear marks of trimming on outer surface. Decayed green glaze covers the outer surface, including the base. Glazed on the inside with transparent, colourless glaze.

### Cat. No. ME10

HNM 03.28.86a  
Jar, Khorasan, 10<sup>th</sup>-13<sup>th</sup> CE (?)  
Earthenware (orange); wheelmade  
Treatment i/s: transparent glaze (green); o/s: transparent glaze (green)  
Decoration o/s: incised

Size (cm): w. 15.6; d. (rim) 8.5; d. (base) 8.8  
Medium-sized jar with piriform body, slanting shoulder, short cylindrical neck, triangular rim. Base, slightly concave. Green glaze covers the entire inner and outer



surface, except for the base. An incised wavy line, framed by two incised horizontal lines, decorates the shoulder. The decoration was incised before glazing. Colour of glaze and fabric resemble those of green glazed bowls (HNM 03.33.86; HNM 03.35.86).

### Cat. No. ME11

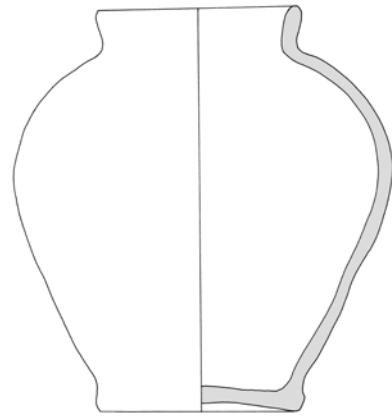
HNM 03.28.86b, see Fig. 1  
Jar, Khorasan, 10<sup>th</sup>-13<sup>th</sup> CE (?)  
Earthenware (orange); wheelmade  
Treatment o/s: slip, transparent glaze (red, green)

Size (cm): h. 17.1; d. (rim) 9.4; d. (base) 7  
Small jar with piriform body, slanting shoulder, short wide neck and slightly everted rim. Low, flat base. Clear marks of trimming on outer surface. Green glaze covers two-thirds of the body and the inside of the rim.



**Cat. No. ME12**

HNM 03.28.86c  
Jar, Khorasan, 12<sup>th</sup>–13<sup>th</sup> CE  
Earthenware (light orange); wheelmade, glaze flakes off  
Treatment i/s: transparent glaze (green); o/s: transparent glaze (green)  
Size (cm): h. 17.5; w. 16.4; d. (rim) 8.3; d. (base) 8.2



*Cat. No. ME13*

**Cat. No. ME14**

HNM 03.28.86f  
Jar, Khorasan, 10<sup>th</sup>–13<sup>th</sup> CE  
Earthenware (buff); wheelmade  
Treatment i/s: transparent glaze (light green); o/s: transparent glaze (green)  
Size (cm): h. 13.1; w. 11.8; d. (rim) 8; d. (base) 6.5



Medium-sized jar with piriform body, cylindrical neck, rounded lip. Low base, slightly concave. Entire inner and outer surface glazed, except for the base.

**Cat. No. ME13**

HNM 03.28.86d  
Jar, Khorasan, 10<sup>th</sup>–13<sup>th</sup> CE  
Earthenware (light orange); wheelmade  
Treatment o/s: transparent glaze (green)  
Size (cm): h. 9.3; w. 9.5; d. (rim) 6.4; d. (base) 5  
Small jar with piriform body, short cylindrical neck, rounded lip. Low, flat base. Glaze covers two-thirds of the outer surface, rim glazed on the inside, base unglazed.



Jar with piriform body. Low, cylindrical neck, flat rim. Low, base, slightly concave. The glaze covers entire inner and outer surface, except for the base and a narrow part above the base.

**Cat. No. ME15**

HNM 03.28.86g  
Jar, Khorasan, 10<sup>th</sup>–13<sup>th</sup> CE  
Earthenware (orange); wheelmade  
Treatment i/s: transparent glaze (light green); o/s: transparent glaze (green)  
Size (cm): h. 12; w. 12.2; d. (rim) 8.3; d. (base) 5.8  
Small jar with piriform body. Low, cylindrical neck, everted rim. Low, base, slightly



concave. Glaze covers the entire surface, except for the base.

**Cat. No. ME16**

HNM 03.28.86h  
Jar, Khorasan, 12<sup>th</sup>–13<sup>th</sup> CE (?)  
Earthenware (buff); wheelmade  
Treatment o/s: transparent glaze (green)  
Size (cm): h. 10.1; w. 10.3; d. (rim) 6.8; d. (base) 4.5



Small jar with piriform body, low cylindrical neck, rounded lip. Low, flat base. Clear marks of trimming on outer surface. Green glaze covers two-thirds of the surface. Below the neck is a band of vertically impressed strokes, resembling the decoration of green glazed bowls (HNM 03.33.86; HNM 03.35.86). Rim glazed on the inside. An almost identical jar is depicted by Fehérvári 2000, 150 cat. no. 183.

**Cat. No. ME17**

HNM 03.28.86i  
Jar, Khorasan, 10<sup>th</sup>–13<sup>th</sup> CE  
Earthenware (light orange); wheelmade  
Treatment o/s: transparent glaze (green)



Size (cm): w. 12.1; d. (rim) 8.1; d. (base) 5.8  
Small jar with piriform body. Low, base, slightly convex. Green glaze covers two-thirds of the surface. Rim glazed on the inside.

**Cat. No. ME18**

HNM 03.28.86k  
Jar, Khorasan, 12<sup>th</sup>–13<sup>th</sup> CE  
Earthenware (light orange); wheelmade



Treatment o/s: transparent glaze (green)  
Size (cm): h. 12.2; w. 12.8; d. (rim) 8.2; d. (base) 5.5  
Small jar with piriform body. Short, slightly conical neck. Slightly concave base. Decayed, iridescent green glaze covers two-thirds of the surface. Rim glazed on the inside.

**Cat. No. ME19**

HNM 03.28.86l  
Jar, Khorasan, 10<sup>th</sup>–13<sup>th</sup> CE  
Earthenware (buff); wheelmade  
Treatment i/s: transparent glaze (green); o/s: transparent glaze (green)  
Size (cm): h. 12.8; w. 19.9; d. (rim) 8.2; d. (base) 6.8



Jar with pear-shaped body, low, cylindrical neck, triangular lip. Low base, slightly concave. Clear marks of trimming on outer surface. Green glaze covers the entire outer surface, except for the base and a narrow part above the base. Completely glazed on the inside.

**Cat. No. ME20**

HNM 03.31.86a



Jug, Khorasan, 12<sup>th</sup>–13<sup>th</sup> CE  
Earthenware (buff); wheelmade  
Treatment o/s: transparent glaze (green)  
Size (cm): h. 8.4; w. 7.5; d. (base) 3.8  
Small jug with conical, then vertical sides, slanting shoulder; neck and handle missing. Low, flat base. Two-thirds of the outer wall glazed. Glaze iridescent.

**Cat. No. ME21**

HNM 03.31.86g  
Small vessel, Khorasan, 12<sup>th</sup>–13<sup>th</sup> CE  
Earthenware (buff); wheelmade  
Treatment i/s: transparent glaze (turquoise); o/s: transparent glaze (turquoise)  
Size (cm): h. 3.9; w. 4.6; d. (rim) 3.2



Small vessel with conical sides. Inverted, funnel-shaped opening. Completely glazed on the outside and for the most part on the inside.

**Cat. No. ME22**

HNM 03.36.86a  
Shallow plate, Khorasan, 11<sup>th</sup>–13<sup>th</sup> CE  
Earthenware (buff); wheelmade, moulded (?)  
Treatment i/s: transparent glaze (green);



o/s: transparent glaze (green)  
Size (cm): h. 2.7; d. (rim) 15.7; d. (base) 6.6  
Shallow plate on a flat base. The rim is slanting; fond and cavetto are divided by a ridge. The foot is cut in a very distinct way. Rim decorated with radially aligned depressions in relief. Three tripod marks can be discerned.



**Cat. No. ME23**

HNM 03.36.86c  
Shallow plate, Khorasan, 11<sup>th</sup>–13<sup>th</sup> CE  
Earthenware (red); wheelmade  
Treatment i/s: transparent glaze (turquoise);  
o/s: transparent glaze (turquoise)  
Size (cm): h. 3; d. 16.5; d. (base) 6.3



Shallow plate with slanting rim on a low, flat base. No decoration. Marks of a tripod stand.

**Cat. No. ME24**

HNM 03.36.86d  
Shallow plate, Khorasan, 11<sup>th</sup>–13<sup>th</sup> CE  
Earthenware (red); wheelmade  
Treatment i/s: transparent glaze (turquoise)  
Size (cm): h. 4.1; d. 15.1; d. (base) 5



Shallow plate with slanting rim on a low, flat base. No decoration. Marks of a tripod stand.

**Cat. No. ME25**

HNM 03.36.86f  
Shallow plate, Khorasan, 11<sup>th</sup>–13<sup>th</sup> CE  
Earthenware (red)  
Treatment i/s: wash; transparent glaze (turquoise); o/s: wash  
Size (cm): h. 3; d. (rim) 14.8; d. (base) 5.1



Shallow plate with broad horizontal rim on a low base. No decoration. Marks of a tripod stand can be discerned.

**Cat. No. ME26**

HNM 03.41.86a  
Lid, Khorasan, 12<sup>th</sup>–13<sup>th</sup> CE  
Earthenware (red); medium fine fabric  
Treatment o/s: slip, transparent glaze (white, green)



Decoration o/s: incised  
Size (cm): h. 9.2; w. 12; d. (rim) 5.2  
Lid with narrow rim and high conical body;

the knob is missing. The upper part shows a deeply incised decoration of diagonal cuts arranged to form a zigzag line; in the squinches are small triangles. The rim is broken.

A comparable unglazed, dome-shaped lid is recorded from Nishapur, Wilkinson 1973, 343 cat. no. 46. Another moulded, dome-shaped lid with clear blue glaze made out of a proto stone-paste is dated by Wilkinson to the 12<sup>th</sup> century, Wilkinson 1976, 265; 278 cat. no. 10.

**Cat. No. ME27**

HNM 03.41.86e  
Small ewer, Khorasan, 12<sup>th</sup>–13<sup>th</sup> CE  
Earthenware (light red); wheelmade



Treatment o/s: opaque glaze (turquoise)  
Size (cm): h. 11.5; d. (rim) 3.3; d. (base) 4.3  
Small ewer with biconical body on a flat base. Narrow neck, flaring rim with a pinched lip forming a nozzle. Handle is missing. Turquoise glaze covers only two-thirds of the outer surface.

**Cat. No. ME28**

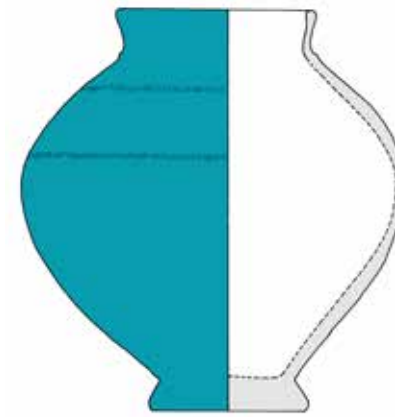
HNM 03.42.86a  
Plate, Khorasan, 12<sup>th</sup>–13<sup>th</sup> CE  
Earthenware (red); fine fabric; wheelmade; tripod marks in centre  
Treatment i/s: slip, transparent glaze (whitish, green)  
Size (cm): h. 5.2; d. (rim) 20; d. (base) 6.3  
Deep plate with rounded walls and broad rim. Medium-high, flat base.



Outside unglazed and not slipped, except for some drops of slip and glaze. Colour of glaze similar to that on HNM 03.33.86b and HNM 03.43.86a.

**Cat. No. ME29**

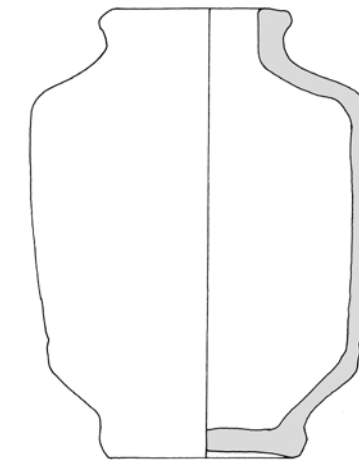
HNM 03.43.86a  
Jar, Khorasan, 12<sup>th</sup>–13<sup>th</sup> CE  
Earthenware (orange); wheelmade  
Treatment i/s & o/s: slip; transparent glaze (white; green)  
Decoration o/s: incised  
Size (cm): w. 17.5; d. (rim) 9; d. (base) 7  
Medium-sized jar with pear-shaped body



and low cylindrical neck. Flat, splayed base. Ridge between shoulder and neck. Green glaze covers the entire inner and outer surface, except for the base and a narrow part above the base. On the upper half of the body are three horizontal bands of vertically placed impressions. This detail and the colour of the glaze connect the object with the group of green glazed bowls and the jar ME16 (HNM 03.2886i).

**Cat. No. ME30**

HNM 03.43.86c  
Albarello, Afghanistan, 13<sup>th</sup>–15<sup>th</sup> CE  
Earthenware (orange); fine fabric; wheelmade  
Treatment i/s: slip; transparent glaze (white; green); o/s: slip; transparent glaze (white; green)  
Size (cm): h. 16.1; w. 12.1; d. (rim) 7.1; d. (base) 6.8  
Albarello shaped jar with conical then vertical sides, slanting shoulder, short horizontal neck and broad, triangular rim on a low flat base. The entire inner and outer



surface, except for the base, is glazed. A comparable Albarello shaped jar is also reported from Nishapur, Wilkinson 1973, 235–236 cat. no. 28.

**Cat. No. ME31**

HNM 04.63.86  
Jar, Khorasan, 12<sup>th</sup>–13<sup>th</sup> CE  
Earthenware (orange); wheelmade  
Treatment o/s: slip, opaque glaze (white, turquoise)  
Size (cm): h. 8.9; w. 9; d. (rim) 5.4; d. (base) 3.8



Small jar with pear-shaped body, narrow neck and everted rim. Flat base. Deep horizontal groove around the middle of the wall, pronounced ridge on the shoulder. Turquoise glaze covers two-thirds of the outer wall.

**Cat. No. ME32**

HNM 03.29.86a  
Lantern, Khorasan, 12<sup>th</sup>–13<sup>th</sup> CE  
Earthenware (buff); wheelmade

