

Eqamatgah, Qarye Kul Ab, Dare-ye Takht (Eqāmat-gāh, Qarye Kol Āb, Dareh-ye Taht)

Cat. No. CS 17

Position Lat. 34° 20' 57.42" (N) Long. 64° 01' 27.68" (E) Height 1,658 (m)

Location 26 km east of Chesht-e Sharif, north of the road from Chesht-e Sharif to Ghur. Map p. 71

Size core area 3,700 m², finds on 1.3 ha

Type settlement

Date 10th/11th; 12th/13th CE (pottery)

Condition core area entirely covered by excavation trenches



Fig. 166 Core area, from north



Fig. 167 General view, from west

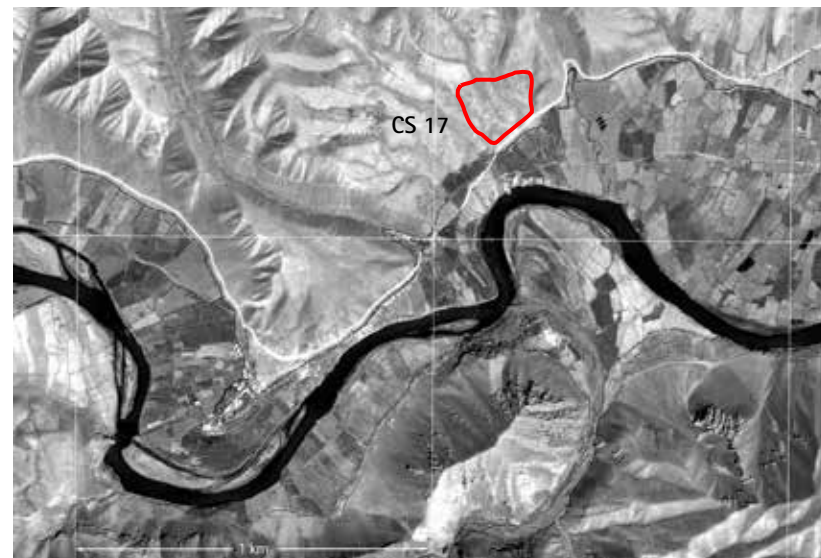


Fig. 168 Location of the site, aerial view

A larger settlement covers a surface of c. 3,700 m² on a shallow hill projecting from the northern edge of the Hari Rud Valley into the plain (Figs. 166–169). It is almost completely excavated, exposing stone walls, large round stones (Fig. 169) and remains of eroded mud-brick walls. The archaeological site extends for c. 1.3 ha to the west of the mound with scattered finds and looters' trenches.



Fig. 169 Exposed remains of stone walls

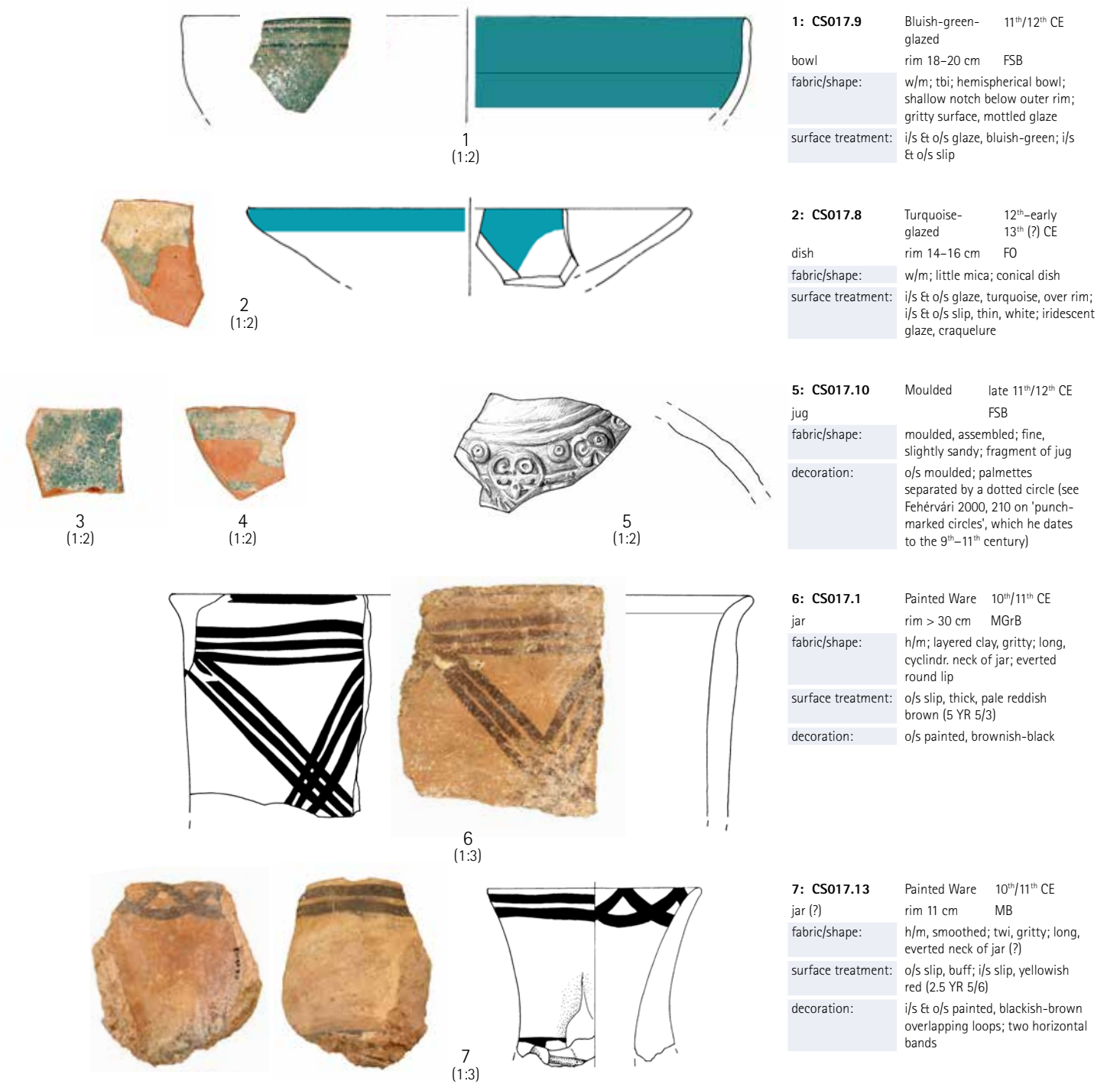
Finds: Among the rather rich assemblage are bluish-green- and turquoise-glazed earthenware sherds of bowls and a jar, all with fine orange fabrics and whitish slips (nos. 1–4). The wide range of handmade medium gritty wares includes PPW with red and buff slips, less carefully produced Black-on-Red or brownish-buff-slipped gritty wares as well as often associated plain types, some with knobs or handles and, sometimes, applied cordons (no. 13, see CS 13, no. 2). To the latter type also belongs an S-shaped pot with an impressed 'bow' handle, but it is more carefully

finished (no. 14), a feature frequently observed with this type of pot. Other household wares include a blackened cooking pot (no. 15) and rims of large vessels (nos. 17; 18) decorated with incised or impressed patterns, and occasionally with a turquoise glaze drop. They are of the same fabric as a cordoned neck at CS 13 (no. 2). Finer wares include a few moulded sherds, a filter, and a well-fired body sherd of orange fabric with a thick whitish-buff slip and incised decoration

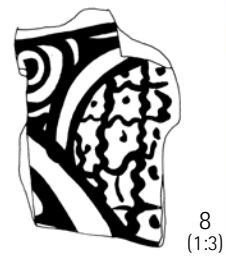
(e.g. no. 19). The cylindrical shaft with strong interior turning marks belongs to a lamp stand (no. 21). No. 16 is of a gritty fabric with slipped sides, and a moulded and orange-painted face. Due to its bent vertical section, it may be part of a 'fireplace', a use as tile is unlikely.

اقامتگاه، قریه کل آب، دره تخت

باقیمانده محل بود و باش در بالای تپه در لبه شمال دره رودخانه هریرود؛ قسمت مرکزی آن در سطح تپه موقعیت دارد و کاملاً حفر شده، در حالی که عمدتاً دیوارهای سنگی (گرد سنگ های بزرگ) بیرون کرده شده، و همچنان باقی مانده دیوارها از خشت خاک رس؛ در غرب تپه آثار پراکنده شده و حفاری غیر قانونی ادامه پیده کرده است.



8: CS017.6 PPW 10th/11th CE
jar (?) MGrB FO
fabric/shape: h/m; mica, gritty; body sherd of jar (?)
surface treatment: o/s slip, thick, buff
decoration: o/s painted, brown



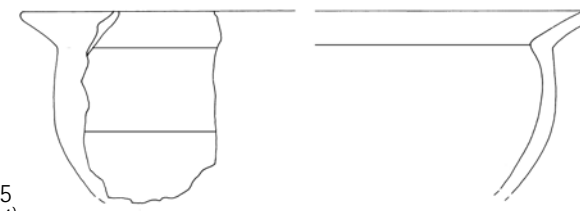
8
(1:3)



9
(1:3)



15
(1:4)



15: CS017.7 Plain Ware 11th-early 13th CE (?)
cooking bowl rim > 30 cm MGrB
fabric/shape: h/m, smoothed; gritty; blackened o/s surface; closed, globular bowl with long, everted rim, round lip
remarks: cp. to CS 18, no. 6

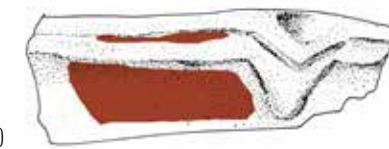
10: CS017.4 PPW 10th/11th CE
pot mbd 20 cm MGrB
fabric/shape: h/m; gritty; body sherd of globular pot
surface treatment: o/s slip, yellowish red (2.5 YR 5/6)
decoration: o/s painted, dark brown



10
(1:3)



16
(1:4)



16: CS017.16 Painted Ware (?) 10th-12th CE
tile (?) MGrB
fabric/shape: grog, gritty; shape unclear
surface treatment: i/s & o/s slip, thick, yellowish buff (10 YR 8/3)
decoration: i/s relief; i/s & o/s painted, pale orange-red (10 R 6/6); flat TC tile with relief decoration, some spaces filled with red slip

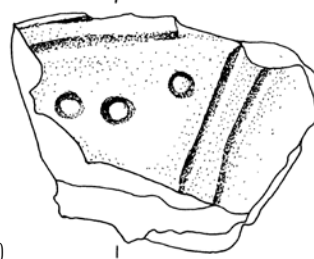
11: CS017.5 Painted Ware 10th-12th CE
bowl rim > 30 cm FO
fabric/shape: h/m; smoothed, burnished; gritty, layered clay; carinated bowl, pointed lip
surface treatment: i/s & o/s slip, reddish brown (5 YR 5/6)
decoration: i/s & o/s painted, blackish-brown; hanging loops; zig-zag lines



11
(1:4)

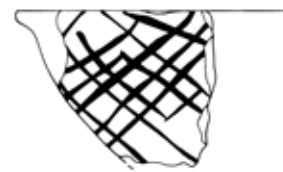


17
(1:2)

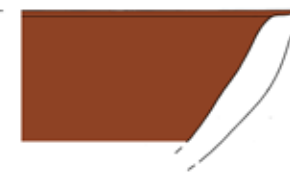


17: CS017.14 Plain Ware 10th-12th CE
rim of tandoor (?) MGrB
fabric/shape: tbi, twi, many holes; fragment of rim
surface treatment: i/s & o/s slip, buff
decoration: o/s incised, impressed; incised triangles (?) with impressed dots

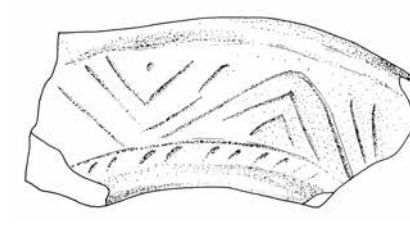
12: CS017.12 Painted Ware 10th-12th CE
bowl rim > 30 cm MGrB
fabric/shape: h/m; tbi, twi, gritty, rather coarse; deep bowl with slightly outturned, pointed rim; small spout
surface treatment: o/s slip, buff; i/s slip, thick, pale reddish brown (5 YR 5/3)
decoration: o/s painted, reddish brown; o/s irregular hatching



12
(1:4)



18
(1:5)



18: CS017.17 Plain Ware 10th-12th CE
pot, medium rim 22 cm MGrR
fabric/shape: h/m; coarse, gritty red-black fabric; extended and upturned rim
surface treatment: i/s & o/s slip, thick, yellowish buff (10 YR 8/3)
decoration: o/s glazed dot, turquoise; o/s incised; multiple opposed triangles, one turquoise dot preserved

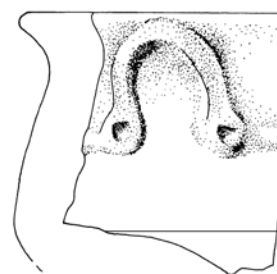
13: CS017.15 Painted Ware 10th/11th CE
pot rim > 30 cm MGrB
fabric/shape: h/m; tbi, twi, grog, gritty; long, cylindrical neck of a big pot
surface treatment: i/s & o/s slip, brownish-buff, partly reddish
decoration: i/s painted, blackish-brown, on rim; o/s appliqué; i/s painted loops; applied cordon, impressed
remarks: cp. to CS 25, no. 11; CS 27, no. 3



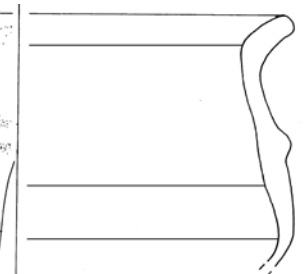
13
(1:4)



14: CS017.11 Plain Ware 10th-12th CE
pot rim c. 21 cm MGrB
fabric/shape: h/m; tb, gritty; S-shaped, carinated pot with everted, angular rim; applied angular handle with two impressed dots and a horizontal ridge
surface treatment: i/s & o/s slip, buff
decoration: o/s impressed



14
(1:3)



19
(1:1)



20
(1:3)



21
(1:3)



Tepe, Dare-ye Takht (Tepe, Dareh-ye Taht)

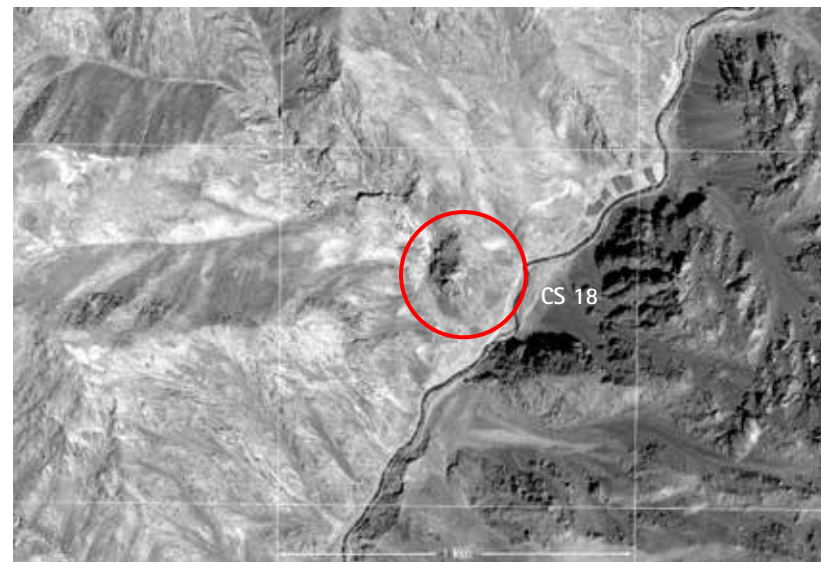
Cat. No. CS 18**Position** Lat. 34° 24' 20.87" (N) Long. 64° 02' 59.74" (E) Height 1,948 (m)**Location** 30 km east-north-east of Chesht-e Sharif, north of the track that is leading from Dare-ye Takht to the northeastern regions of Chesht-e Sharif Province, 6.5 km north of the Hari Rud. Map p. 71**Size** finds on 200 m (N-S)**Type** hilltop settlement**Date** 11th/12th CE (?) (pottery)**Condition** partly excavated

Fig. 171 Location of the site, aerial view

Settlement remains and finds are located upon an extremely steep promontory, c. 75 m above the creek, quite deep inside a side vale of the Hari Rud (Figs. 170–172). Structures built of angular hewn rocks (Fig. 173), some taking advantage of natural stone formations, are concentrated on the mountain top (Fig. 170) and the adjacent slope below. A few looters' trenches have exposed stone walls on both sides. In one area a small *mihrab* (recent), built of larger stones, gives the orientation for praying (Fig. 174).

Finds: Turquoise- to bluish-green- and green-glazed earthenware sherds with whitish slips (nos. 1–5), many handmade gritty buff, reddish and orange sherds of various shapes, some with simple black-painted decorations on buff or reddish-brown slips (nos. 7; 8), and a few painted Black-on-Red gritty ware sherds, including two dotted stub handles, and one buff-slipped PPW sherd were collected.

تپه, دره تخت

باقیمانده محل بود و باش در بالای کوه شیب دار؛ تقریباً 75 متر ارتفاع از دره، ساختمان از سنگ های مربع ساخته شده بودند، برخی از قسمت ها از سنگ های طبیعی همین کوه میباشند؛ در شمال آن همچنین در هر دو طرف از گودال های حفاری غیر قانونی دیوار های سنگی دیده میشود. در یکی از منطقه (احتمالاً اخیر) محراب ساده از سنگ های بزرگ ساخته شده و منطقه به عنوان محل عبادت استفاده شده است.



Fig. 170 View of the hilltop, from northeast



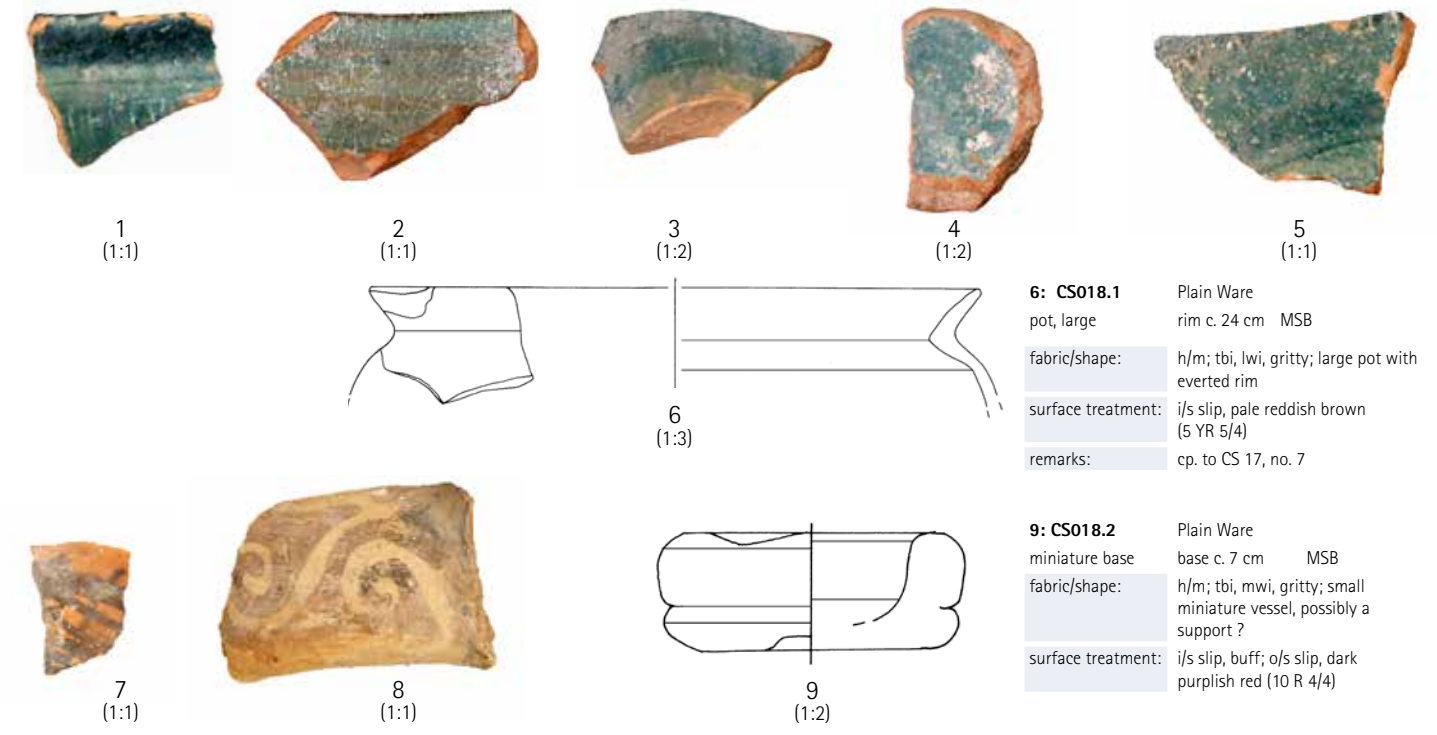
Fig. 172 General view of the site, from below



Fig. 173 Remains of stone walls



Fig. 174 Hilltop prayer place



6: CS018.1 Plain Ware
pot, large
rim c. 24 cm MSB
fabric/shape: h/m; tbi, lwi, gritty; large pot with everted rim
surface treatment: i/s slip, pale reddish brown (5 YR 5/4)
remarks: cp. to CS 17, no. 7

9: CS018.2 Plain Ware
miniature base
base c. 7 cm MSB
fabric/shape: h/m; tbi, mwi, gritty; small miniature vessel, possibly a support?
surface treatment: i/s slip, buff; o/s slip, dark purplish red (10 R 4/4)



Fig. 175 General view of the site, from the opposite banks of the creek, from northwest

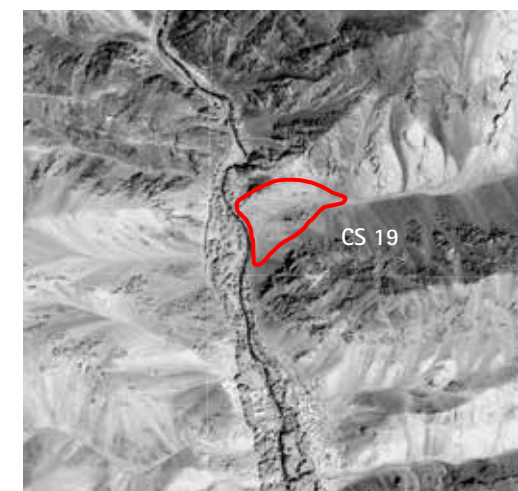


Fig. 176 Location of the site, aerial photo

Eqamatgah, Dare-ye Takht (Eqāmat-gāh, Dareh-ye Taht)

Cat. No. CS 19**Position** Lat. 34° 23' 00.16" (N) Long. 64° 02' 44.28" (E) Height 1,737 (m)**Location** 28.5 km east of Chesht-e Sharif, 4 km north of the Hari Rud, on the northern limitation of the Dare-ye Takht 'oasis'. Map p. 71**Size** finds on 1.6 ha**Type** settlement; tomb (venerated)**Date** 10th/11th; 12th/13th CE (pottery)**Condition** surface entirely covered by excavation trenches**Add. No.** site quoted from Franke/Urban 2006 by Ball 2019, no. 2047

The entire mouth of a small side valley and the adjoining northernmost part of the 'oasis' of Dare-ye Takht have been systematically excavated (Figs. 175–176; 178–180). Stone walls built of slate rocks up to a height of over 1.50 m are recognisable in the excavation trenches (Fig. 178), but loam lies on the surface. Finds are scattered to the west, limited by the stream Dare-ye Barzan, which carried water even in August.

Finds: The collection reveals the wide variability within types (Fig. 177): Present are Slip-painted sherds of fine orange fabric with a clear glaze (nos. 1; 2) and incised sherds (green, brown, yellowish, 'Bamiyan' type: nos. 6; 7) of a bowl, green- (nos. 3–5) and bluish-green-, probably alkaline glazed sherds, the latter with iridescent glazes (Fig. 177). Moulded sherds are also attested (nos. 8–10). The majority belongs to the painted Black-on-Red or brownish-slipped gritty wares, part of PPW. One shows the additional use of whitish pigment as a background, and another has applied bands (Fig. 177, centre left). Also present are Black-on-Buff and Red-on-Buff bichrome examples (nos. 11–20). Besides a cooking pot, a brownish-slipped gritty red rim of a storage jar or 'tandoor', decorated with raised and incised cordons, is present (nos. 21; 22). No. 23 is a slate whetstone.



Fig. 177 Surface collection, pottery



Fig. 178 Looters' trenches with exposed dry-stone walls, from west



Fig. 179 Elongated venerated tomb to the west of the site

اقامتگاه, دره تخت
 تمام ساحه ورودی دره در قسمت شمال واحه دره تخت اصولی حفر شده. در داخل گودال ها دیوار های بلندی با تقریباً 1.5 متر بلندی دیده میشود که از سنگ های مسطح شکل ساخته شده؛ خرابه گل رس در بالا کم دیده میبود. آثار در غرب تا جوی دره تخت که در ماه آگست در آن آب جاری است، دیده میشود.

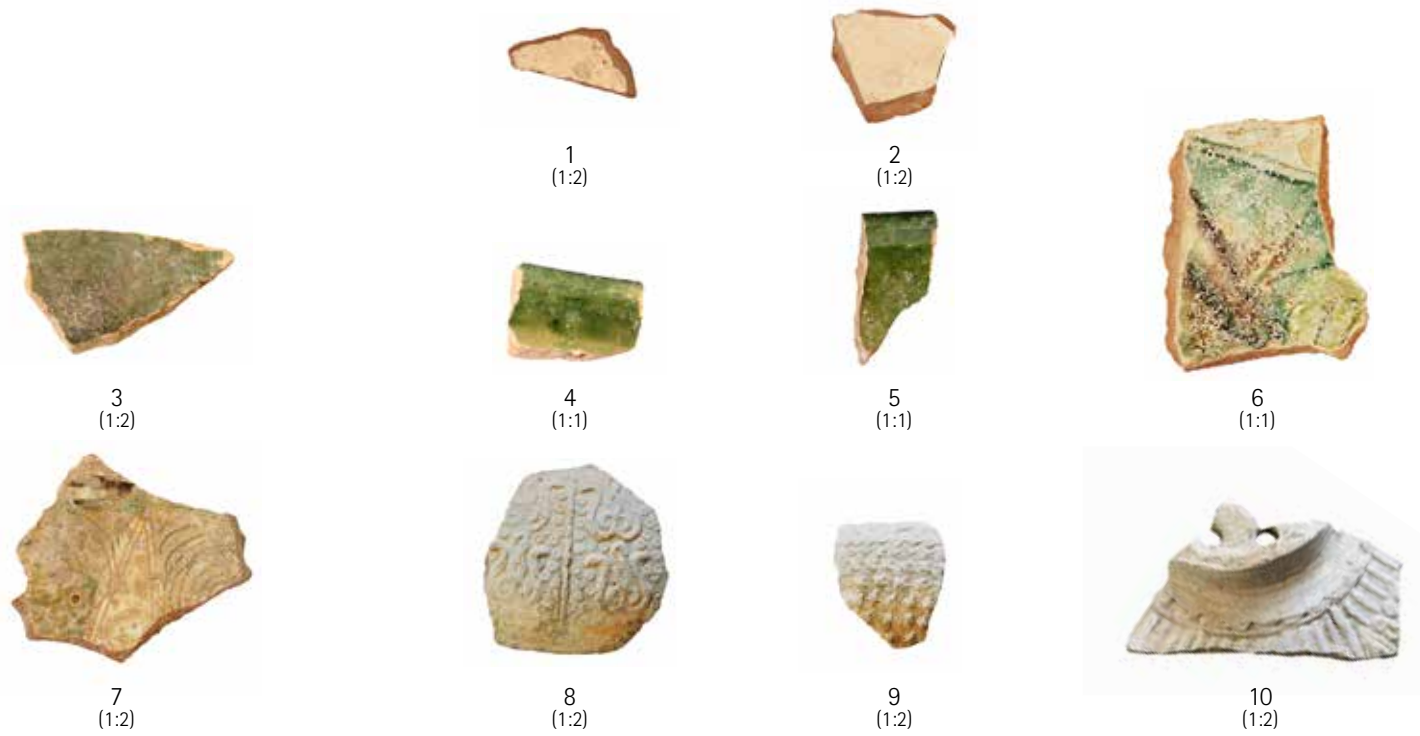
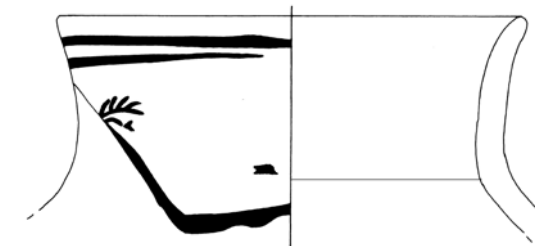
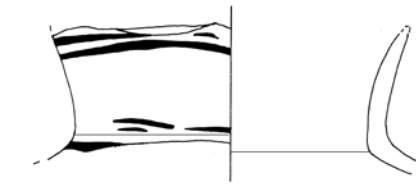


Fig. 180 General view, from the west; assembled 180° photo



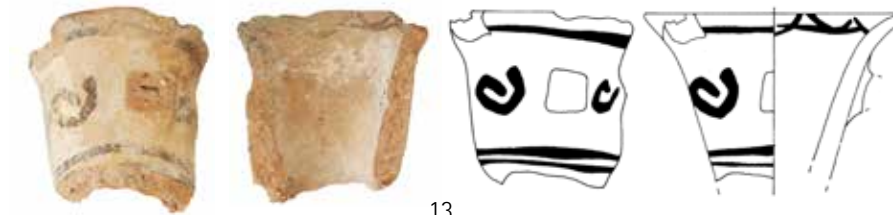
11
(1:3)

11: CS019.4 Painted Ware 10th/11th CE
 jar rim 18 cm FSR
 fabric/shape: w/m; lbi, lwi, gritty; long, outturned neck of a jar
 surface treatment: i/s Et o/s slip, reddish brown (2.5 YR 5/4)
 decoration: o/s painted, blackish



12
(1:3)

12: CS019.8 Painted Ware 10th/11th CE
 jar rim 14 cm MSR
 fabric/shape: h/m; mbi, mwi, gritty; neck of a jar
 decoration: o/s painted, blackish-brown



13
(1:3)

13: CS019.5 Painted Ware 10th/11th CE
 jar rim 10 cm MGR
 fabric/shape: h/m; tbi, twi, gritty; narrow neck of a jar or bottle, handle broken
 surface treatment: i/s wash; o/s slip, buff
 decoration: i/s Et o/s painted, blackish



14
(1:3)

14: CS019.3 PPW (?) 10th/11th CE
 pot rim c. 26 cm MB
 fabric/shape: h/m; lbi, grog, gritty; pot with long, everted rim
 surface treatment: i/s slip, pale orange-red (2.5 YR 6/6)
 decoration: o/s painted, reddish brown; dotted lozenges; scrollwork in fields; careless drawing stylised animal ?