



The Nal Horizon. Catalogue

Bowl Types

Red- or Black-Slipped Bowls

Cat. No. 292
 Conical bowl
 Central Baluchistan
 3100–2800/2700 BCE
 Earthenware, dark pinkish red; w/m; black slip on both surfaces, mottled at places
 Size (cm): d. (rim) 11.7; d. (base) 12.2; h. 4.1
 Small bowl with straight upper part and disc base. This type belongs to the



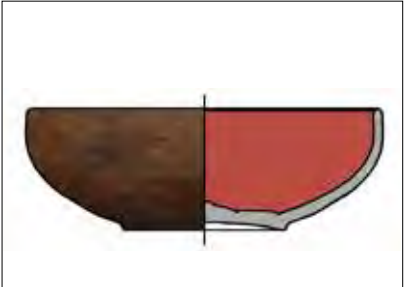
following group of objects with similar shapes (cat. nos. 291–303) and is well-known from Period II at Sohr Damb/Nal. See: Hargreaves 1929, Pl. XVI, 1(a)
 Doc. No. 1128–263

Cat. No. 293
 Globular bowl
 Central Baluchistan
 3100–2800/2700 BCE
 Earthenware, light reddish brown; w/m,



carved; thick black slip on both surfaces
 Size (cm): d. (rim) 16.1; d. (base) 6.3; h. 6.8
 Small bowl with straight upper part and ring base.
 Doc. No. 0000–184

Cat. No. 294
 Hemispherical bowl
 Central Baluchistan
 3100–2800/2700 BCE
 Earthenware, pale orange-red; w/m; thick red mottled to black on both surfaces
 Size (cm): d. (rim) 12.1; d. (base) 5.5; h. 4.4



Small bowl with straight upper part and ring base.
 Doc. No. 1263–562

Cat. No. 295
 Globular bowl
 Central Baluchistan
 3100–2800/2700 BCE
 Earthenware, orange; w/m, heavily carved; thick red slip on exterior surface, thick brown on interior part



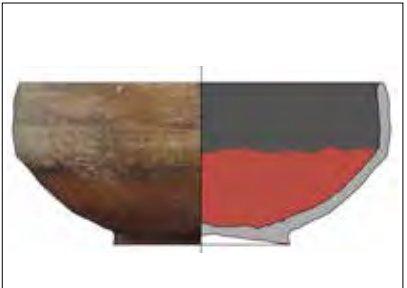
Size (cm): d. (rim) 11.0; d. (base) 4.4; h. 4.6
 Small bowl with upright rim and upper part and ring base.
 See: Hargreaves 1929, Pl. XVI, 1(a)
 Doc. No. 0000–797

Cat. No. 296
 Conical bowl
 Central Baluchistan
 3100–2800/2700 BCE
 Earthenware, orange; w/m; thick red slip on both surfaces
 Size (cm): d. (rim) 19.6; d. (base) 6.7; h. 8.0



Medium-sized bowl with upright rim, straight upper part and ring base.
 See: Hargreaves 1929, Pl. XVI, 1(c)
 Doc. No. 0000–187

Cat. No. 297
 Conical bowl
 Central Baluchistan
 3100–2800/2700 BCE
 Earthenware, light reddish brown; w/m; blackish brown slip, mottled to red on



exterior surface and thick red on interior
Size (cm): d. (rim) 12.4; d. (base) 5.8;
h. 5.9
Small bowl with straight upper part,
upright rim and shallow ring base.
See: Hargreaves 1929, Pl. XVI, 1(a)
Doc. No. 0000–790

Cat. No. 298
Globular bowl
Central Baluchistan
3100–2800/2700 BCE

Earthenware, orange; w/m, strongly
carved; thick black slip on both surfaces,
mottled to red
Size (cm): d. (rim) 11.7; d. (base) 7.1;
h. 5.6
Small bowl with inward-turned rim, upper
part and flat disc base.



Doc. No. 1135–274

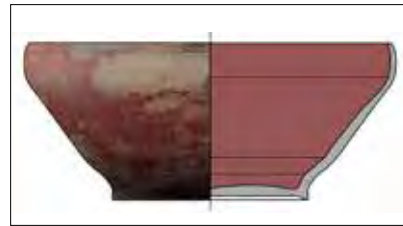
Cat. No. 299
Globular bowl
Central Baluchistan
3100–2800/2700 BCE
Earthenware, reddish yellow; h-w/m,
carved; thick black slip on both surfaces
Size (cm): d. (rim) 10.1; d. (base) 4.1;
h. 4.6



Small bowl with upright rim, inward-
turned upper part and ring base.
Doc. No. 1262–570

Cat. No. 300
Conical bowl
Central Baluchistan
3100–2800/2700 BCE

Earthenware, pale brownish yellow
w/m and carved; thick red slip on both
surfaces
Size (cm): d. (rim) 18.8; d. (base) 7.7;
h. 8.3



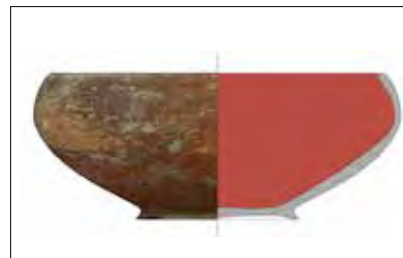
Medium-sized bowl with upright rim,
inward-turned upper part and ring base.
Doc. No. 1083–288

Cat. No. 301
Conical bowl
Central Baluchistan



Earthenware, pale pinkish red; w/m, carved
and trimmed; red slip on both surfaces
Size (cm): d. (rim) 16.4; d. (base) 7.1;
h. 6.7
Medium-sized bowl with inward-turned
rim and disc base.
Doc. No. 1256–567

Cat. No. 302
Conical bowl



Central Baluchistan
3100–2800/2700 BCE
Earthenware, pale orange; w/m; thick slip
on both surfaces
Size (cm): d. (rim) 14.7; d. (base) 5.7;
h. 5.8
Small bowl with inward-turned upper part
and ring base.

Doc. No. 1258–547

Cat. No. 303
Conical bowl
Central Baluchistan



3100–2800/2700 BCE
Earthenware, light yellowish red; w/m,
carved and trimmed; thick black on both
surfaces
Size (cm): d. (rim) 15.0; d. (base) 7.8;
h. 6.0
Small bowl with inward-turned rim and
ring base.
Doc. No. 1257–546

Cordoned Bowls

Cat. No. 304
Globular bowl
Central Baluchistan
3100–2800/2700 BCE
Earthenware, pale reddish brown; w/m,
trimmed; whitish buff slip on exterior
upper part, black on both surfaces
Size (cm): d. (rim) 19.7; d. (base) 8.3;
h. 9.4
Medium-sized cordoned bowl with
inward-turned rim and ring base. The
decoration on the exterior upper part

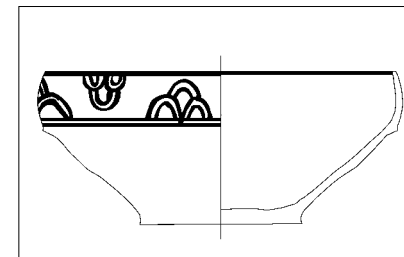


shows a frieze of arrowheads, pointing
right. Both decoration and shape are
well-known from the excavations at Sohr
Damb/Nal, Period II.
See: Franke-Vogt/Ibrahim 2005, Fig. 6,2;
Franke 2008a, Fig. 145; Hargreaves 1929,
Pl. XVII,5
Doc. No. 0601–587



Cat. No. 305
Conical bowl
Central Baluchistan, 3100–2800/2700 BCE
Earthenware, orange-red; w/m, trimmed;
thick buff slip
Size (cm): d. (rim) 26.2; d. (base) 11.5;
h. 10.9

Large cordoned bowl with inward-turned
rim and disc base. On the exterior upper
body, the frieze shows ten alternating
sets of three-grape patterns, framed by
the ridge appliqué below. One design is
irregularly shaped for lack of space. Similar
motifs are known from the Nal repertoire,



also in polychrome versions.
See: Franke-Vogt 2003/4, Fig. 38; Franke
in press b, Pl. 15,d
Doc. No. 0463–779

Cat. No. 306
Conical bowl
Central Baluchistan
3100–2800/2700 BCE
Earthenware, light reddish brown; w/m;
thick buff slip
Size (cm): d. (rim) 25.2; d. (base) 9.9; h. 11.3
Large cordoned bowl with inward-turned
rim and ring base. Above the outer ridge
appliqué, the frieze shows six pointed
leaves turned to the left. The same motif
occurs on a bowl from a Period II tomb
excavated at Sohr Damb/Nal.

See: Franke-Vogt 2003/4, Fig. 13
Doc. No. 0439–114

Small Bowls

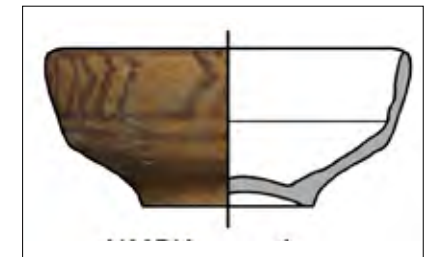
Cat. No. 307
Globular bowl
Central Baluchistan, 3100–2800/2700 BCE



Earthenware, light reddish brown; w/m;
thick buff slip on both surfaces
Size (cm): d. (rim) 7.6; d. (base) 3.0; h. 3.8
Miniature bowl with upright rim and ring
base. The shape is very uneven. Painted
below the outer rim is a frieze of hanging
and standing triangles with upper red and
lower yellow infills. Identical decorative
patterns appear on bowls from Period II at
Sohr Damb/Nal.
See: Franke-Vogt/Ibrahim 2005, Fig. 6,5;
Franke 2008a, Fig. 145; Hargreaves 1929,
Pl. XVII,51
Doc. No. 1073–377

Cat. No. 308
Carinated bowl
Central Baluchistan

3100–2800/2700 BCE
Earthenware, reddish yellow; h-w/m,
carved
Size (cm): d. (rim) 8.3; d. (base) 3.9; h. 3.7
Miniature bowl with upright rim and
ring base. The decoration on the exterior
upper part shows sets of arrowheads,
pointing right. Similar patterns occur on
pottery from Period II at Sohr Damb/Nal.
Several decorative variants of this motif
are present in the collection (cat. nos. 304,
379, 562, 566, 569, 570, 610).
See: Franke-Vogt/Ibrahim 2005, Fig. 6,2;
Hargreaves 1929, Pls. XVII,5; XVIII,14



Doc. No. 1163–379

Conical Carinated Bowls

Cat. No. 309
Conical bowl
Central Baluchistan
3100–2800/2700 BCE



Earthenware, orange; w/m, heavily carved; thin creamy buff slip, over rim
Size (cm): d. (rim) 11.3; d. (base) 5.5; h. 6.8
Small bowl with ring base. Above the outer carination the surface is decorated with two thick, black horizontal bands. Similar decorative elements are common on pottery related to Period II at Sohr Damb/Nal.

See: Franke 2008a, Fig. 205; Hargreaves 1929, Pl. XIX, 16
Doc. No. 0000–199

Cat. No. 310

Conical bowl
Central Baluchistan
3100–2800/2700 BCE



Earthenware; w/m, carved; thin buff slip on both surfaces
Size (cm): d. (rim) 12.2; d. (base) 5.2; h. 5.8

Same type as cat. no. 309.
Doc. No. 1124–273

Cat. No. 311

Conical Bowl
Central Baluchistan
3100–2800/2700 BCE



312 314



Earthenware; w/m, trimmed and carved; buff slip on outer surface
Size (cm): d. (rim) 11.7; d. (base) 4.0; h. 6.4

Type similar to cat. nos. 309 and 310. In this case the number of horizontal lines varies. The patterns form a central set.
Doc. No. 1125–270

Cat. No. 312

Conical bowl
Central Baluchistan, 3100–2800/2700 BCE
Earthenware, orange; w/m; buff slip on outer surface, once thick
Size (cm): d. (rim) 11.3; d. (base) 3.6; h. 6.7

Small bowl with ring base. Above the outer carination, the frieze comprises a double zig-zag band formed out of hanging and standing triangles. The decoration is framed above and below by a horizontal band. The inner surface bears traces of imprints, as a result of stapling in the kiln. The motif is very common in the Nal repertoire of Period II.

See: Franke 2008a, Figs. 142; 144; Hargreaves 1929, Pl. XVII, 49; 51
Doc. No. 0615–712

Cat. No. 313

Conical bowl
Central Baluchistan
3100–2800/2700 BCE
Earthenware, pale orange-red; w/m, trimmed; thick buff slip on outer surface
Size (cm): d. (rim) 9.4; d. (base) 3.3; h. 5.3
Small bowl with ring base. Above the outer carination, the decoration shows four metopes divided by vertical lines. Painted inside each panel are three zig-zag lines vertically arranged. The inner surface is decorated with the same patterns due to stacking in kiln. These motifs are quite common on pottery from Period II excavated at Sohr Damb/Nal, but here they appear in vertical sets for the first time.



See: Franke 2008a, Figs. 142; 144; Hargreaves 1929, Pls. XVII, 49; 50; XIX, 3
Doc. No. 0635–634

Cat. No. 314

Conical bowl
Central Baluchistan
3100–2800/2700 BCE
Earthenware, pale yellow; w/m, carving marks; thick whitish buff slip on outer surface



Size (cm): d. (rim) 9.6; d. (base) 3.1; h. 5.7
Small bowl with ring base. The decoration above the outer carination consists of double stepped motifs, which are opposed. The patterns are very regularly executed. These decorative elements are among the most common and distinctive patterns of the Nal repertoire. In the collection decorative variants of these motifs appear on several form types.

See: Hargreaves 1929, Pl. XVII, 26; 30
Doc. No. 0640–600

Cat. No. 315

Polychrome conical bowl
Central Baluchistan
3100–2800/2700 BCE
Earthenware, light red; probably coil made and finished on wheel, trimmed and carved
Size (cm): d. (rim) 11.3; d. (base) 3.6; h. 6.2

Small bowl with ring base. The decoration above the outer carination shows a smaller upper frieze with a double zig-zag pattern. Inside the patterns are painted with blue. Below, the decoration comprises *omega* signs painted on yellow ground and framed by two red bands with black contours. The combination of these two friezes occurs also on other form types in the collection (cat. nos. 495, 511, 512) and it is a quite common decorative configuration of the Nal repertoire.

See: Franke-Vogt/Ibrahim 2005, Fig. 6,4; Franke in press b, Pl. 7,e; Hargreaves 1929, Pl. XVIII, 14
Doc. No. 0885–458

Cat. No. 316

Polychrome conical bowl
Central Baluchistan
3100–2800/2700 BCE
Earthenware, pale orange-red; w/m, carved; whitish buff on the outer surface
Size (cm): d. (rim) 13.3; d. (base) 4.2; h. 8.0
Small bowl with uneven carination and small ring base. On the exterior upper wall, the decoration shows a frieze with seven geometric elements. Four hatched ellipses on yellow ground are joined by



double triangular patterns. The red infills are inserted between the hatchings, while the blue pigment is preserved only at a few spots. Painted at one place are two triangular elements, serving as filling motifs for the lack of space. Similar combinations occur also on Period II pottery excavated at Sohr Damb/Nal. For the first time, however, the complete motif can be observed. A monochrome and simpler version of the pattern is also present in the collection (cat. no. 385).
Doc. No. 0474–167

Cat. No. 317

Conical bowl
Central Baluchistan



315 316

3100–2800/2700 BCE
Earthenware, pale orange-red; w/m, trimmed
Size (cm): d. (rim) 10.3; d. (base) 4.1; h. 5.9
Small bowl with ring base. The frieze above the outer carination includes four panels subdivided by four vertical bands. Each metope shows a heart-shaped pipal leaf with open stem. The upper edges are decorated with small triangular filling patterns.



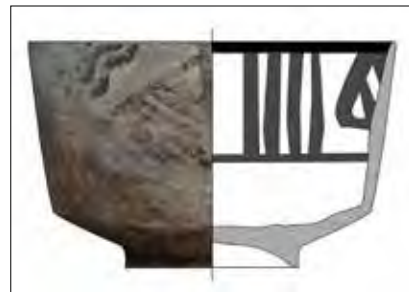
The pipal motif both in the polychrome and monochrome version is one of the most common floral designs in the Nal repertoire. The bowl is part of a group of vessels that share the same decoration and form (cat. nos. 318–323). Occurring also on different shapes in the collection (cat. nos. 343–346, 408–411, 467, 473–482, 487–493, 501–504, 520, 521, 543, 573, 579, 580, 606, 622), this arrangement shows a variability in the presence of colours, filling patterns and geometrical metopes, probably due to different pottery workshops.

See: Franke in press b, Pl. 5,g; Hargreaves 1929, Pl. XVII, 24
Doc. No. 0649–743

Cat. No. 318

Conical bowl
Central Baluchistan
3100–2800/2700 BCE

Earthenware, pale orange-red; w/m; thick buff slip on outer surface and wash on inner surface
Size (cm): d. (rim) 13.6; d. (base) 6.4; h. 8.2
Small bowl with ring base. Similar decoration as on cat. no. 317. In this case,



triple stepped motifs serve as filling patterns in the upper corners. The same motif is mirrored on the inside due to firing in a stacked position. The monochrome design is executed with an extremely thick brush and less carefully.

Doc. No. 0000–195

Cat. No. 319

Polychrome conical bowl
Central Baluchistan
3100–2800/2700 BCE

Earthenware, pale red-orange; w/m; thin buff slip
Size (cm): d. (rim) 12.0; d. (base) 3.7; h. 5.8
Same type as cat. no. 317, but polychrome. The original blue paint is probably not



Doc. No. 0000–188

Cat. No. 320

Conical bowl
Central Baluchistan
3100–2800/2700 BCE

Earthenware, pinkish red; w/m; thick whitish buff slip on outer surface and wash on inner surface
Size (cm): d. (rim) 11.8; d. (base) 4.3; h. 5.9
Small bowl with slightly inward-turned rim



and ring base. Same type as cat. no. 317. In this case the geometric panel contains a triple decorative element formed by two vertical, linked ellipses. The interior upper wall shows a clear replica of the outer decoration, which is a result of stapling during firing.

Doc. No. 0605–579

Cat. No. 321

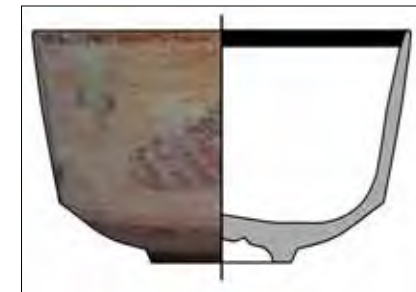
Polychrome conical bowl
Central Baluchistan
3100–2800/2700 BCE

Earthenware, orange; w/m; buff slip on exterior surface, red-orange on interior
Size (cm): d. (rim) 11.8; d. (base) 4.7; h. 6.9



Small bowl with shallow ring base. On the upper part, the frieze shows the same decoration as cat. no. 317, but polychrome. The geometric panel comprises a narrow square with a wavy vertical double line in the centre and red infill on the left side.

Doc. No. 0000–053

Cat. No. 322

Polychrome conical bowl
Central Baluchistan

3100–2800/2700 BCE
Earthenware, pale orange-red; w/m; thin wash
Size (cm): d. (rim) 11.5; d. (base) 4.1; h. 6.8
Same type as cat. no. 317, but polychrome.
Doc. No. 0000–086

Cat. No. 323

Polychrome carinated bowl
Central Baluchistan
3100–2800/2700 BCE

Earthenware, pale orange-red; h-w/m, slightly over-fired; once buff slip on outer surface
Size (cm): d. (rim) 8.1; d. (base) 2.6; h. 4.1
Miniature bowl with disc base. Same type as cat. no. 317.

In this case the bowl is polychrome-painted and the heart-shaped pipal motifs are not divided by vertical lines.

Doc. No. 0626–664

Cat. No. 323



324 325

Beaker Types**Elongated Conical Beakers****Cat. No. 324**

Elongated beaker
Central Baluchistan
3100–2800/2700 BCE

Earthenware, pale orange; w/m, heavily carved and trimmed; thick whitish buff slip on outer surface and wash on inner surface
Size (cm): d. (rim) 9.6; d. (base) 3.4; h. 7.7

Medium-sized beaker with slightly outward-turned rim and ring base. On the outer wall the frieze shows three irregular hourglass motifs, framed below by two horizontal lines. Similar versions of this pattern were also found on pottery from Period II at Sohr Damb/Nal. The motif, however, is also present in Period III.

The shape is a new addition to the Nal repertoire of Period II. See: Franke-Vogt/Ibrahim 2005, Fig. 6,9; Langer 2008, Fig. 9z
Doc. No. 0620–610

Cat. No. 325

Elongated beaker
Central Baluchistan

3100–2800/2700 BCE
Earthenware, light red; w/m, heavily trimmed and carved; pinkish thick buff slip
Size (cm): d. (rim) 10.2; d. (base) 3.7; h. 10.3

Medium-sized beaker with ring base. The exterior upper part is decorated with a

frieze showing four horns with ears. The patterns are hatched with arrowheads, standing on a horizontal band. Below follow three further horizontal lines. The patterns are very well-executed. Below the inner rim runs a brownish-red band.

Cat. No. 326

Elongated beaker
Central Baluchistan
3100–2800/2700 BCE

Earthenware, yellowish red; w/m; very thin buff wash
Size (cm): d. (rim) 10; d. (base) 3.3; h. 8.6



Medium-sized beaker with ring base. On the exterior upper body, the decoration shows four hatched single horns with ears aligned above three horizontal bands. The conical shape and the single-horn motif were previously unknown in the ceramic assemblage related to

Period II at Sohr Damb/Nal, but are present in other collections preserved in museums.

For the motif without low ear, see: Cortesi 2014, 66

Doc. No. 0000–109

Cat. No. 327

Elongated beaker
Central Baluchistan
3100–2800/2700 BCE

Earthenware, orange; w/m, carved and trimmed; thick buff slip on outer surface, over rim

Size (cm): d. (rim) 9.5; d. (base) 3.9; h. 9.2



Same type as cat. no. 326. This example, however, shows no ears, only horns rising from two horizontal bands. Imprinted on the inner surface is the same decoration, which is a result of stapling in the kiln.

Below the inner rim runs a red band.
Doc. No. 1206–013