

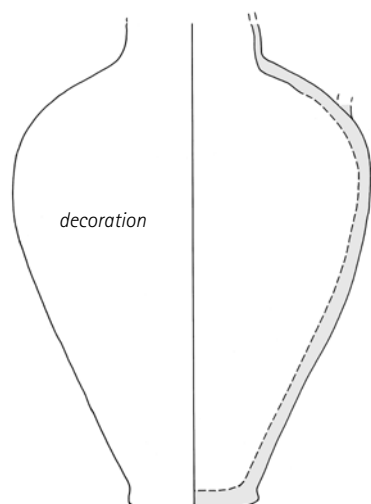
Unglazed Painted Pottery from the 10th to the 13th Century. Magic Motifs. Catalogue

Type 1: Cat. Nos. PP1–13

Jars with pear-shaped body, cylindrical neck, usually one vertical handle, low disc-base; fine fabric, wheelmade; buff slips, monochrome painting.

Cat. No. PP1

HNM 89.140
Jar, Eastern Khorasan, 10th– early 13th CE
Earthenware (buff; fine fabric); wheelmade
Treatment o/s: slip (buff)
Decoration o/s: painted (dark brown)
Size (cm): h. 39; w. 26.5; d. (rim) 9.5; d. (base) 10.2



Tall jar with pear-shaped body, short neck, broken, one handle was attached to shoulder. Shallow disc base.

Painted decoration, dark brown in three friezes, the one on the neck is not preserved. The main field is on the shoulder and over the body, the third one on the lower body. The upper frieze is divided into four triangular fields: one large, covering almost 50% of the space (at the handle), three smaller ones. They are filled with a large variety of forms, combined in different ways. Repeated are roundels with two different fill patterns: 1x fishscale, 7x garlands with rosettes. Fishscale, hatched fields, touch and appearance recall prehistoric pottery, but handle, shape and details are different. The lower frieze is divided into five vertical fields by vertical lines and four super-imposed hook-patterns. In the main metope, possibly abstract plants (?) rise with two stems and two blossoms (dots?), which frame a scroll-like pattern growing out of the left or right blossom.

The jar is finely made and wheel-thrown, which sets it apart from the typical PPW.

Cat. No. PP2

HNM 04.23.86
Jug, Eastern Khorasan, 10th– early 13th CE
Earthenware (buff; fine fabric); wheelmade
Treatment i/s & o/s: wash (brownish-buff)
Decoration o/s: painted (blackish-brown)
Size (cm): h. 32; w. 22; d. (base) 13
Tall jug with pear-shaped body, handle and neck are missing. Flat, triangular disc base, pierced secondarily.

Painted decoration on the upper half of the body. The surface is divided into three patterned friezes, separated by bands with cross-hatching or aligned parallel lines respectively. The two friezes on the body show an identical pattern, consisting of a horizontally placed almond-shaped element, terminating in a pair of lanceolate leaves or scrolls. These shapes faintly recall swimming birds (ducks). Their bulbous body is filled



with a ladder pattern. The two friezes are separated by a band with overlapping zigzag lines, but the diagonal strokes are carried out individually, not continuously; they recall stylised fish patterns. The uppermost decoration on the shoulder consists of four ladder patterns with hanging loops or zigzag, framing the neck as an irregular square; a simple star is painted in the corners.

Cat. No. PP3

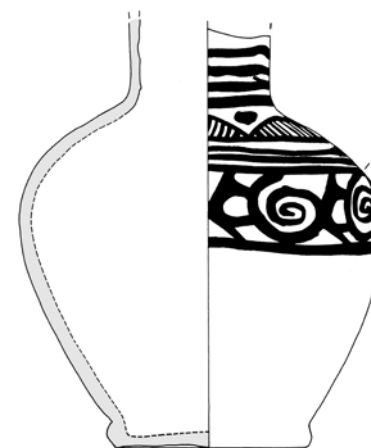
HNM 04.29.86a
Jug, Eastern Khorasan, 10th– early 13th CE
Earthenware (orange-buff; fine fabric); wheelmade
Treatment i/s & o/s: slip (buff)
Decoration o/s: painted (dark brown)



Size (cm): h. 17.4; w. 16.8; d. (base) 8.5
Jug with pear-shaped body, narrow, slightly flaring neck, fragmented. Vertical handle with rectangular cross-section, attached to the shoulder, upper part missing. Flat disc base, rounded section (carved).
Painted decoration on the upper part of the body and the neck. Main frieze: two spirals placed one above the other, framed by Y-shaped forms and linked by diagonal, hatched bands. On the shoulder: four hatched, leaf-like shapes frame the neck, triangles as fillers in the spandrels. On the neck: horizontal lines.

Cat. No. PP4

HNM 04.29.86c
Jug, Eastern Khorasan, 10th– early 13th CE
Earthenware (orange; fine fabric); wheelmade
Treatment o/s: slip (buff)
Decoration o/s: painted (manganese-brown)
Size (cm): h. 18.5; w. 15.2; d. (base) 7.8
Jug with pear-shaped body, cylindrical neck, rim and handle broken. Flat disc base, triangular section (carved).



Painted decoration on the upper part of the body and the neck. A broad band filled with spirals and U-shaped elements, bordered above by two parallel lines. On the shoulder: four hatched, leaf-like shapes frame the neck, with stars as fillers; on the neck: horizontal lines.

Cat. No. PP5

HNM 04.29.86i
Jug, Eastern Khorasan, 10th– early 13th CE



Earthenware (buff; fine fabric); wheelmade
Treatment o/s: slip (buff)
Decoration o/s: painted (manganese-brown)
Size (cm): h. 15.8; w. 14.2; d. (base) 6.3
Jug with pear-shaped body, neck and handle missing. Flat disc base, triangular section (carved).
Painted decoration on the upper part of the body. A frieze of roundels filled alternately with dots and spirals. On the shoulder: four hatched, leaf-like shapes frame the neck, with stars as fillers; on the neck: horizontal lines.

Cat. No. PP6

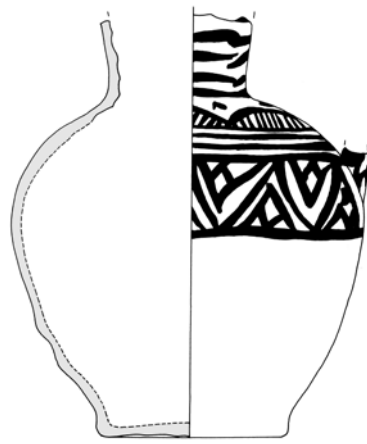
HNM 04.29.86d
Jug, Eastern Khorasan, 10th– early 13th CE
Earthenware (orange; fine fabric); wheelmade
Treatment o/s: slip (buff)
Decoration o/s: painted (manganese-brown)
Size (cm): h. 15; w. 15.6; d. (base) 7.6
Jug with squat, pear-shaped body, restricted lower part; neck and handle missing. Flat disc base, triangular section (carved).
Painted decoration on the upper part of the body: a broad band with aligned, dotted



diapers set into an overlapping zigzag band forming larger diapers. In the spandrels: triangles. Above: two parallel lines. On the shoulder: four hatched, leaf-like shapes frame the neck, with stars as fillers.

Cat. No. PP7

HNM 04.29.86b
Jug, Eastern Khorasan, 10th– early 13th CE
Earthenware (orange; fine fabric); wheelmade
Treatment o/s: slip (buff)
Decoration o/s: painted (brown)
Size (cm): h. 18; w. 15; d. (rim) 6.4; d. (base) 7.6



Jug with pear-shaped body, cylindrical, slightly flaring neck; top broken. Vertical handle with rectangular cross-section, attached to upper body, upper portion missing. Flat, triangular disc base.

Painted decoration on the upper part of the body and the neck: a broad band with standing triangles, filled with two opposed triangles creating a stylised fish (see cat. no. PP2). Above: two parallel lines. On the shoulder: hatched, leaf-like shapes frame the neck, with dots as fillers. On the neck: four horizontal lines are preserved.

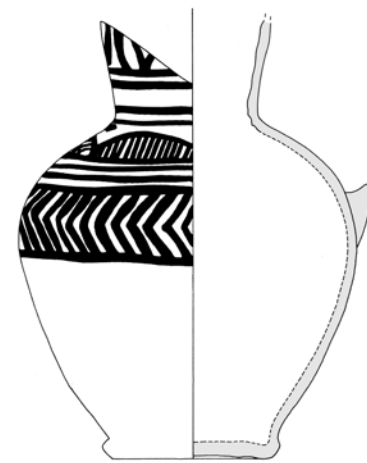
Cat. No. PP8

HNM 04.29.86k

Jug, Eastern Khorasan, 10th– early 13th CE
Earthenware (orange; fine fabric); wheelmade
Treatment o/s: slip (buff)

Decoration o/s: painted (manganese-brown)
Size (cm): w. 15.1; d. (base) 7.5

Jug with pear-shaped body, cylindrical neck, broken; handle missing. Flat disc base, triangular section (carved).

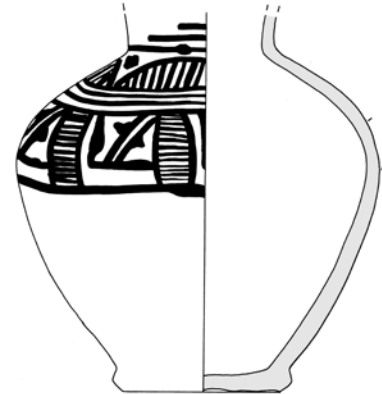


Painted decoration on upper part of body and neck. A broad frieze with herring-bone pattern. Above: two parallel lines. The neck is framed by a square, consisting of four leaf-shaped, hatched forms with dots as fillers. On the neck: parallel, horizontal lines, topped by a band of opposed large and small triangles.

Cat. No. PP9

HNM 04.29.86f

Jug, Eastern Khorasan, 10th– early 13th CE
Earthenware (orange; fine fabric); wheelmade
Treatment o/s: slip (buff)



Decoration o/s: painted (manganese-brown)
Size (cm): h. 15.5; w. 15; d. (base) 6.6

Jug with pear-shaped body, neck broken, handle missing. Flat disc base, triangular section (carved).

Painted decoration on the upper part of the body. A frieze divided by ladder-patterns into fields showing pseudo-inscriptions (?). Three horizontal, parallel lines above. These lines as well as the narrow field on the main frieze reveal that the planning of space did not work out, in addition, the horizontal lines are not joining, showing careless painting. The neck is framed by a square, consisting of four leaf-shaped, hatched forms with stars as fillers.

Cat. No. PP10

HNM 04.29.86g

Jug, Eastern Khorasan, 10th– early 13th CE
Earthenware (orange; fine fabric); wheelmade
Treatment o/s: slip (buff)

Decoration o/s: painted (manganese-brown)
Size (cm): h. 15.7; w. 15.3; d. (base) 7.8

Jug with pear-shaped body, neck and handle broken. Flat disc base, triangular section (carved).



Painted decoration on the upper part of the body. A frieze divided by vertical lines into fields filled with smaller quadrangles showing alternatingly squares with cross-hatching and pseudo-inscriptions (?). Three horizontal, parallel lines above. The neck is framed by a square, consisting of four leaf-shaped, hatched forms with dots as fillers in the spandrels.

Cat. No. PP11

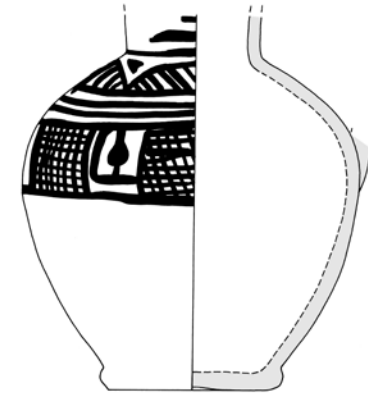
HNM 04.29.86h

Jug, Eastern Khorasan, 10th– early 13th CE
Earthenware (light orange; fine fabric); wheelmade; rope marks above the base
Treatment i/s Et o/s: slip (buff)

Decoration o/s: painted (manganese-brown)
Size (cm): h. 15.5; w. 14; d. (base) 6.8

Jug with pear-shaped body, neck and handle missing. Flat disc base, triangular section (carved).

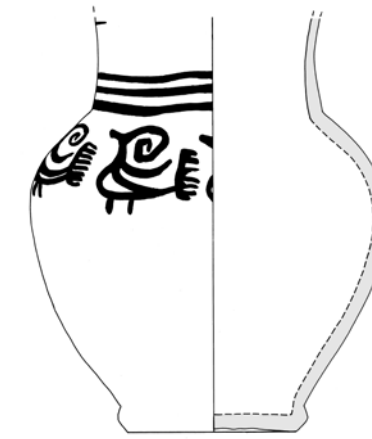
Painted decoration on the upper part of the body. A frieze with squares, showing alternatingly cross-hatching and pseudo-inscriptions (?). Two horizontal, parallel lines above. The neck is framed by leaf-shaped, hatched forms with dots as fillers in the spandrels. On the neck: horizontal lines.



Cat. No. PP12

HNM 04.34.86a

Jar, Eastern Khorasan, 10th– early 13th CE



Earthenware (buff; fine fabric); wheelmade
Treatment i/s Et o/s: wash (buff)

Decoration o/s: painted (brown)

Size (cm): h. 17.8; w. 15.6; d. (base) 7.2

Jar with pear-shaped body and wide, cylindrical neck, almost completely missing. Low disc base.

Painted decoration on the shoulder and the neck: a frieze of stylised bird figures depicted in profile, facing left, with a comb-shaped tail and a spiralling element evolving from the heads. On the neck: three horizontal lines.

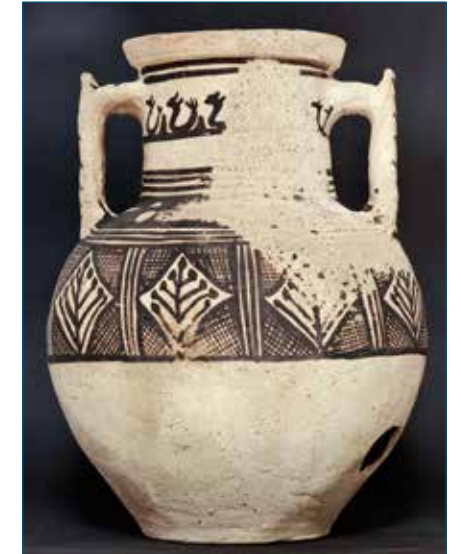
Cat. No. PP13

HNM 04.22.86

Jar, Eastern Khorasan, 10th– early 13th CE
Earthenware (buff; medium fabric, gritty, medium-sized black inclusions); assembled, wheelmade, smoothed

Treatment i/s Et o/s: wash (buff)

Decoration o/s: painted (dark brown), impressed on handle



Size (cm): h. 38; w. 28.5; d. (rim) 16.8; d. (base) 14

Large pear-shaped jar, cylindrical neck, everted, triangular rim. Exceptional: two vertical bridge-handles attached to shoulder and below the rim. Oblong cross-section. Flat base. Pierced hole on lower body.

Parts of the painted decoration are deteriorated: The upper body is divided into three horizontal friezes: The lower one is a broad band divided by vertical double lines into nine compartments. Each field is filled by a diaper with an inscribed stylised tree. The remaining triangular spaces are filled with cross-hatching. The frieze on the shoulder is difficult to reconstruct, due to deterioration of painting. Mostly irregular, solid black spaces with buff dots spared out against the dark background. The frieze on the neck is framed by a horizontal triple line below and a double line above, just below the rim.

The remaining surface is filled with aligned stylised, possibly swimming birds (?) moving from right to left, facing left. On the handles: diagonal strokes, three circular impressions on their lower body.

Type 2: Cat. Nos. PP14–19

Flasks with pear-shaped body, attached elongated, narrowing or concave shoulder, narrow mouth with flaring rim, one vertical handle, flat base; coarse to medium gritty fabric, handmade; buff slips, monochrome painting.

Cat. No. PP14

HNM 89.157

Flask, Eastern Khorasan, 10th– early 13th CE
Earthenware (red; gritty); handmade,
assembled

Treatment i/s & o/s: slip (buff)

Decoration o/s: painted (dark brown)

Size (cm): h. 27.4; w. 14.5; d. (rim) 6.2;

d. (base) 8.8



Flask with globular body and long, conical neck and everted rim, both attached separately. Long, vertical, round handle. Flat base. The buff slip was renewed on the right side, no painting is visible there.

Painted simple decoration on the body: frieze with sets of alternately one and two diagonal lines, framed by two horizontal lines below and one above.

On the neck: a frieze with two triangular shapes with evolving branches. Sloppily painted.

Cat. No. PP15

HNM 04.24.86a

Ewer, Eastern Khorasan, 10th– early 13th CE
Earthenware (orange; medium fabric);
handmade, assembled

Treatment i/s & o/s: slip (buff)

Decoration o/s: painted (reddish-brown)

Size (cm): h. 33.8; w. 20.4; d. (rim) 5.3;

d. (base) 12

Large ewer with pear-shaped body, slanting shoulder attached to body, short neck with everted, ridged and impressed rim. Handle attached to shoulder and rim, circular cross-section, incised. Flat base. Body pierced.

Faintly visible painted decoration on the upper half of the body, shoulder and neck, divided into horizontal friezes: a broad frieze with four compartments, marked by two vertical lines, filled with wavy scrolls of interlocking S-shapes. On the shoulder: aligned spirals, dotted loops in intermittent spaces. Above, a narrow band with small S-shaped elements, indicating braiding (?). On the neck: a broad



frieze divided into compartments by double lines, filled with a centrally placed, stylised tri-lobed blossom. Sloppily painted.

Cat. No. PP16

HNM 04.24.86b

Ewer, Eastern Khorasan, 10th– early 13th CE
Earthenware (orange; medium fabric);
handmade, assembled

Treatment i/s: wash (buff); o/s: slip (buff)
Decoration o/s: painted (manganese-brown)
Size (cm): h. 35; w. 21.7; d. (base) 11.5

Large ewer with pear-shaped body, slanting shoulder, conical neck, attached to body, apparently reworked; rim broken. Vertical handle attached to shoulder and neck, circular cross-section. Flat base.

Painted decoration on the shoulder and the neck, divided into horizontal friezes by triple lines. Lower frieze with aligned oblong roundels with curls, subdivided by further horizontal lines. The remaining surface between the ovals is filled with diagonal lines. On the neck: broad frieze divided by vertically inter-locked S-shapes, alternating with *boteh*-shapes. On the upper part of the neck: a frieze with horizontal *boteh*-shapes.

Cat. No. PP17

HNM 04.71.86c

Ewer, Eastern Khorasan, 10th– early 13th CE
Earthenware (orange; medium fabric);
handmade, assembled

Treatment o/s: slip (buff)

Decoration o/s: painted (reddish-brown)

Size (cm): h. 16.9; w. 13.6

Ewer with pear-shaped body, slanting shoulder. Handle and neck missing. Flat base. Painted decoration on the body and the neck. On the body: two superimposed rows of aligned *Tamga*-like symbols, looking like stylised rams' horns. On the base of the neck: three parallel lines, sloppily painted. Upper frieze not preserved.

**Cat. No. PP18**

HNM 04.70.86h

Ewer, Eastern Khorasan, 10th– early 13th CE
Earthenware (orange; medium fabric);
handmade, assembled

Treatment o/s: slip (buff)

Decoration o/s: painted (blackish-brown)

Size (cm): h. 17.1; w. 11.5;

d. (base) 6.7



Ewer with pear-shaped body, concave neck, rim missing. Vertical handle attached to shoulder and neck, consisting of three strings of clay, topped by a group of three clay knobs. Flat base.

Painted decoration on two thirds of the body and the neck, three friezes separated by triple lines. The lowest frieze shows pairs of lanceolate elements with spirals and hatching, arranged horizontally in two rows. This frequent pattern recalls a snail or high-spired sea-shell. In the resulting spandrels, ornaments resembling cloud-band motifs. On the neck: a narrow frieze with aligned heart-shaped elements, below the rim a narrow frieze with cross-hatching. On one side the decoration is only faintly preserved.

Cat. No. PP19

HNM 04.71.86e

Ewer, Eastern Khorasan, 10th– early 13th CE
Earthenware (brownish-orange; coarse
fabric); handmade

Treatment o/s: slip (buff)

Decoration o/s: painted (reddish-brown)

Size (cm): h. 19.9; w. 12.8; d. (base) 5.8

Ewer with pear-shaped body, the conical



neck is not separately attached to the body. Rim broken, handle missing. Flat base.

The painted decoration on upper part of the body and the neck consists of three friezes separated by double lines. The lower one shows a double zigzag line. Short spirals grow from the tips of the zigzags. The second frieze shows a spiralling scroll, the narrow upper one on the rim aligned triangles pointing left. On one side: remains of soot.

Type 3: Cat. Nos. PP20–22

Ewers with bulbous, globular body, attached narrowing shoulder or neck, narrow mouth with flaring rim, one spout, one vertical handle; coarse to medium, gritty fabric, handmade; buff and brown slips, monochrome painting.

Cat. No. PP20

HNM 04.70.86a

Ewer, Eastern Khorasan, 10th– early 13th CE
Earthenware (orange; fine fabric, white
inclusions); handmade, assembled

Treatment o/s: slip (buff)

Decoration o/s: painted (brown)

Size (cm): h. 17.1; w. 13.1; d. (rim) 8;

d. (base) 7.8

Small ewer with globular body. Bipartite shoulder and neck, attached to the body, with conical lower and flaring upper part, lobed rim, chipped. Funnel-shaped, upwards pointing spout. Vertical handle, attached to body and below the rim. On the handle: two green-glazed inset sherds. High, splaying ring base.



Painted decoration on the upper part of the body and the neck. The frieze on the body shows roundels filled with hatched elements. On the lower part of the neck: wavy band with large loops. The upper frieze shows cross-hatching. Inside: aligned loops.

Cat. No. PP21

HNM 04.70.86e

Ewer, Eastern Khorasan, 10th– early 13th CE
Earthenware (brownish-orange; medium
fabric); handmade, assembled

Treatment o/s: slip (buff)

Decoration o/s: painted (brown, red)

Size (cm): h. 13.4; w. 11.8

Small ewer with globular body, slightly concave neck and everted rim. Tubular spout, vertical, twisted handle, attached to body and neck, knob at the top. Flat base.

Painted decoration on two thirds of the upper body and neck. On the body: a broad band with a bold hanging triangle, spirals inside, in the spandrels lanceolate-shaped spiralled

