

Glazed Earthenware from the 10th to the 13th Century Catalogue

Slip-Painted Pottery (Cat. Nos. SP1–87)

Calligraphic Black on White Slip (Cat. Nos. SP1–16)

Cat. No. SP1

HNM 01.34.86a, see Fig. 1
Bowl, Khorasan, 10th–11th CE
Earthenware (orange-red); wheelmade
Treatment i/s & o/s: slip (white)/transparent glaze (colourless, yellowish tint)
Decoration i/s: slip-painted (manganese black)
Size (cm): h. 8; d. (rim) 25.7; d. (base) 10.2
Bowl with conical wall on a low disc base. A Kufic inscription with elongated *hastae* painted in manganese black runs around the rim: '*al-mujmil/mujmal*' (?). Approximately two-thirds of the wall consist of sherds from

الْحَمْدُ لِلَّهِ الْمَوْلَى



four other bowls of the same type. The base with a central dot comes probably also from another bowl. The outer surface does not present a homogenous picture. Large wall parts are slipped to two-thirds; the glaze is almost completely lost, inside and outside. See e.g. for Samarqand: Shishkina/Pavchinskaja 1992, cat. no. 125.

Cat. No. SP2

HNM 89.044
Bowl, Khorasan, 10th–11th CE
Earthenware (reddish); wheelmade
Treatment i/s & o/s: slip (white)/transparent glaze (colourless)



Decoration i/s: slip-painted (black)
Size (cm): d. (rim) 24
Rim fragments of a conical bowl. The painted decoration consists of a line in bold Kufic: '*... al-janna*' (?). The baseline of the writing follows the rim. The outside is only partly slipped and glazed. The glaze has a markedly greenish tinge. See Kalterer 1995, Fig. 238.

Cat. No. SP3

HNM 89.047
Bowl, Khorasan, 10th CE
Earthenware (medium, reddish); wheelmade
Treatment i/s & o/s: slip (white)/transparent glaze (colourless)



Size (cm): d. (rim) 24
Fragment of a bowl with straight sides. The painted decoration consists of a bold inscription in black with one *hasta* in red running on the inner rim. The letters show incised details. The outside is only partly slipped and glazed. See for the type Grube 1994b, cat. no. 72: Iran, 10th CE

Other sherds in the collection show an even more elaborate style with larger letters and more filler motifs, particularly with dots, or floriated letters. Two of them show a bordering upper frieze with dots and

triangles, which links them to examples from Type 2 (cat. nos. SP17–22) and parallels from Transoxania. See Kalterer 1995, Fig. 240.

Unregistered sherds from this group show the presence of various other calligraphic styles, the lowest reading: '*baraka[t]*'.



Cat. No. SP4

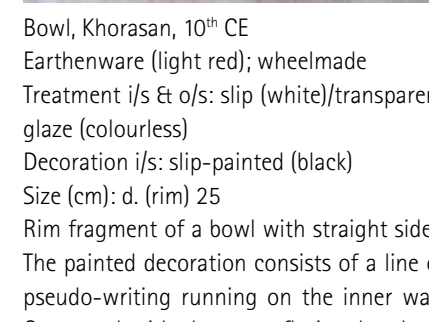
HNM 89.061
Bowl, Khorasan, 10th CE
Earthenware (reddish); wheelmade
Treatment i/s & o/s: slip (white)/transparent glaze (colourless)
Decoration i/s: slip-painted (greyish black)
Size (cm): d. (rim) 22
Fragmented bowl with curved body and vertical upper part, pointed rim. The base is not preserved. The slip-painted decoration consists of a frieze of Kufic '*baraka*'. The writing was



first sketched with a darker colour and then the letters filled. The outside is only partly slipped and glazed. A set of three strokes is placed below the rim. See Shishkina/Pavchinskaja 1992: 11th cent.

Cat. No. SP5

HNM 89.055
Bowl, Khorasan, 10th CE
Earthenware (light red); wheelmade
Treatment i/s & o/s: slip (white)/transparent glaze (colourless)
Decoration i/s: slip-painted (black)
Size (cm): d. (rim) 25
Rim fragment of a bowl with straight sides. The painted decoration consists of a line of pseudo-writing running on the inner wall. Compared with the more floriated style of the previous examples, this style is rather geometric. The outside is completely slipped and glazed.



For Lashkari Bazar see: Gardin 1963, Pl. XIV. B4. - Curatola 2006, cat. no. 30.

Cat. No. SP6

HNM 89.059
Bowl, Khorasan, 10th CE
Earthenware (reddish); wheelmade
Treatment i/s & o/s: slip (white)/transparent glaze (colourless)
Decoration i/s: slip-painted (black, red, green)
Size (cm): d. (rim) 27
Fragment of a bowl with straight sides. The slip-painted red and greenish decoration consists of a panel with black writing along the rim.



The panel is framed by a red line. Parts of the rim were recently re-painted green. The outside is only partly slipped and glazed.

A similar inscription without the red and green lines is preserved on another sherd:



Cat. No. SP7

HNM 01.41.86
Bowl, Khorasan (Nishapur?), 10th–11th CE
Earthenware (reddish); wheelmade
Treatment i/s & o/s: slip (white)/transparent glaze (colourless)
Decoration i/s: slip-painted (manganese black)
Size (cm): h. 5.7; d. (rim) 18.9; d. (base) 7
Conical bowl on low, flat disc base. On the outside, traces of turning are clearly visible. Sparse decoration in black on white. Three irregularly placed dots in the centre, they



might be later additions since they were applied on the glaze and their colour is different. A bold inscription with several repetitions of a formula ('*al-yumn*'? ['good luck']) runs on a baseline, approximately one-third below the rim. The vertical length of the letters in this 'label-like' frieze reduces from right to left. The outside is almost completely slipped. A transparent glaze is applied on the outer body to just above the base. For a very close epigraphic comparison for cat. nos. SP6 and 7 from Lashkari Bazar see Gardin 1963, cat. no. 126.

Cat. No. SP8

HNM 01.44.86a
Jar, Khorasan, 10th–11th CE
Earthenware (reddish-buff, gritty); wheelmade
Treatment i/s & o/s: slip (buff)/transparent glaze (colourless)
Decoration o/s: slip-painted (manganese black)
Size (cm): h. 12.7; d. (rim) 8.5; d. (base) 5
Heavily potted small jar with pear-shaped body, flat shoulder and vertical neck with extended rim. The decoration is painted in black slip on a buff ground. The rim is framed by a black line. A broad band with an inscription running on the maximum body diameter belongs to a frequent type



Cat. No. SP9

HNM 01.44.86c
Jug; Khorasan, 10th–12th CE
Earthenware (reddish); wheelmade
Treatment i/s & o/s: slip (buff)/transparent glaze (colourless)
Decoration o/s: slip-painted (black)
Size (cm): h. 11.7; d. (rim) 8; d. (base) 4
Little jug with globular body, slanting shoulder, conical neck with ridges, string-cut base. Handle missing; remains preserved on rim and shoulder. The decoration consists of a similar inscription as on cat. no. SP8, painted in manganese black. The glaze has a greenish tint, extending almost down to the foot, and up to the narrowest point on the inside. Glaze drop under the base. Black pigments have mixed with the glaze during firing; their orientation indicates that the piece was probably fired stuck with its neck onto a stack.

of formula, added 'stamp-like' to form long continuous horizontal or vertical inscriptions, or shorter 'labels'. The glaze was originally very brilliant with a greenish tint. It extends on the outside down to c. 3 cm above the foot, and up to the shoulder carination on the inside. The flat base was added separately, it is crude and of different colour. Possibly, it is a recent addition. The vessel was slightly deformed during firing. The same type of inscription also occurs in a 'stamp-like' stylised and rather abstract or more cursive style, the latter often with floriated or bifurcated ends. The letters are added to form horizontal or axial bands or shorter 'labels'.



The base of bowl HNM 89.104 (size in cm: d. [rim] 14; h. 4.5) is an example of such an abstract, perpendicular 'label-like' inscription. The letters are framed by a field, which is repeated (not fully preserved) and linked by two parallel baselines. Letters and epigraphy are close to those on cat. no. SP8 and correspond also to the following entries.

HNM 89.104



Cat. No. SP10

HNM 89.090
Bowl, Khorasan, 10th–11th CE
Earthenware (medium, reddish); wheelmade



Treatment i/s & o/s: slip (white)/transparent glaze (colourless)
Decoration i/s: slip-painted (manganese black)
Size (cm): d. (rim) 24
Rim of a bowl with slightly inward-curved sides around the rim. The painted decoration consists of a frieze running on the inner wall framed by two lines and bearing an inscription. Only parts of the outer wall are slipped and glazed. The glaze has a markedly green tinge.

There are many parallels to cat. nos. SP10–13, see e.g. for Nishapur: Wilkinson 1973, cat. no. 3.18 and others; 57; 59, 10th–11th cent. – For epigraphy: Ghouchani 1986, cat. nos. 97–99; for Lashkari Bazar: Gardin 1963, cat. nos. 128; 129. See also Watson 2000, cat. no. Ga8 (green and white on red slip). – Curatola 2006, cat. nos. 33; 37, dated to the 9th–10th and 10th–11th century.

For parallels to the type of inscription and arrangements with lily and bird motifs as they occur on Slip-Painted Ware, see also two blue underglaze bowls in the Khalili Collection (Grube 1994e, cat. nos. 217–218: fritware, Iran, late 12th–13th century, reading: 'al daulah' [wealth]).

Cat. No. SP11

HNM 010.03.97
Bowl, Khorasan, 10th CE
Earthenware (red); wheelmade, trimmed
Treatment i/s & o/s: slip (white)/transparent glaze (colourless)
Decoration i/s: slip-painted (manganese black, red)
Size (cm): d. (rim) 17; h. 4.5



Globular bowl with inward-curved upper body, round rim and disc base. The painted decoration consists of an inscription band that runs across the bowl through the centre. It shows the same letters as above, but written in a more floriated style, repeating four times 'baraka[t]'. The letters are not connected through a baseline. Two identical birds, executed in a slightly different style, are painted in red, facing right, resp. left. The outer wall is slipped and glazed to above the base. For comparisons see cat. no. SP10.

Cat. No. SP12

HNM 89.095
Bowl, Khorasan, 10th CE



Earthenware (red); wheelmade
Treatment i/s & o/s: slip (white)/transparent glaze (colourless)
Decoration i/s: slip-painted (black)
Size (cm): h. 8; d. (rim) 20; d. (base) 5
Fragment of a bowl with conical sides above a groove near the disc base. The painted decoration consists of a broad band of writing ('baraka' [?]), arranged perpendicularly to the wall, preserved three times. Visible on the outside are only a few traces of slip and none of the glaze.

Cat. No. SP13

HNM 89.045
Bowl, Khorasan, 10th CE
Earthenware (reddish); wheelmade
Treatment i/s & o/s: slip (white)/transparent glaze (colourless, greenish tinge)
Decoration i/s: slip-painted (black)
Size (cm): h. 3.5; d. (rim) 10; d. (base) 5



Small fragmented bowl with straight sides, round rim and a carination at the disc base; painted decoration in black on white. A broad frieze with repetitions of calligraphy, preserved three times, runs across the centre perpendicularly to the rim. The outside is only partially slipped and glazed. A close comparison is a small rim sherd of a bowl (HNM 89.089, see below).
See also Wilkinson 1973, cat. no. 3.57. He compares this slightly less stylised form to inscriptions on textiles from the 11th century. Watson 2004, cat. no. Ga8, on red slip.

Sherd (89.089) with similar epigraphy:



Cat. No. SP14

Not registered, doc. no. B73.23
Bowl, Khorasan, 10th CE
Earthenware (red); wheelmade, carved
Treatment i/s & o/s: slip (white)/transparent glaze (colourless)
Decoration i/s: slip-painted (manganese black)
Size (cm): d. (rim) 18; d. (base) 6
Fragmented, wide bowl with upright sides, round rim, and disc base with string-cut marks. The lower sides, just at the base, are carved.



An inscription frieze with repeated writings, preserved three times, runs perpendicularly across the centre. The outside is only partially slipped and glazed on the upper third.

Cat. No. SP15

HNM 89.062
Bowl, Khorasan, 10th CE
Earthenware (buff); wheelmade
Treatment i/s & o/s: slip (white)/transparent glaze (colourless, yellowish tinge)
Decoration i/s: slip-painted (brown)
Size (cm): d. (rim) 25; d. (base) 11
Fragmented bowl with curved sides, the pointed rim bends inwards, low flat disc base. The slip-painted decoration consisting of a line of bold writing runs through the central axis on the inner surface. The letters are marked by thin elongations of the tips and dots added to the letter 'mim'. Below the rim is at least one stylised element, also with dots. The very fine buff fabric is unusual for this group.



Cat. No. SP15

Cat. No. SP16

HNM 88.036, see Fig. 9
 Bowl, Khorasan (?), 10th CE (?)
 Earthenware (buff, fine, but with grits); wheelmade, trimmed or carved
 Treatment i/s & o/s: slip (buff, blackened)/transparent glaze (colourless)
 Decoration i/s: slip-painted (black)
 Size (cm): h. 3.5; d. (rim) 10.8; d. (base) 4.2
 Small bowl with carination near the base and slightly convex sides; the flat base also has a carinated section. The painted decoration consists of a single line of calligraphy running across the base of the bowl. It is



written with a very thin brush and marked by downward-turned, bifurcated tops of *hastae*, similar in style and fineness of the brush characteristic of the yellow-staining group. The slip, which is partly applied onto the outer base, is partly blackened. The rather clumsy base with unusual shape might be a later addition, indicated also by a seam visible on the inside. In combination with the unusual fabric, slip and glaze, doubts arise about the originality of the bowl. At first glance its appearance recalls Opaque Glazed White Ware and its imitations, but it lacks the typical S-shaped section. The calligraphic style is also different; see for Nishapur: Wilkinson 1973, 179–203; for Samarqand: Shishkina/Pavchinskaja 1992, cat. nos. 138 and 139; and also Grube 1994a+b, cat. nos. 30 and 92.

Black Decoration on White Slip (cat. nos. SP17–22)

Cat. No. SP17

HNM 01.35.86f, see Fig. 2
 Bowl, Khorasan, 10th–11th CE
 Earthenware (reddish); wheelmade
 Treatment i/s & o/s: slip (white)/transparent glaze (colourless)
 Decoration i/s: slip-painted (black)
 Size (cm): h. 6.5; d. (rim) 19.8; d. (base) 8
 Well-made conical bowl on a low, flat disc base with a ridge, marks of turning on the base, tripod marks in the centre. Around the rim runs a narrow band of hanging solid triangles, followed by a wavy line with intermittent dots. A short inscription (*'Su'ād' [?]*) is painted in the centre. The outside is covered by white slip, the upper third is glazed. The fine red to red-orange fabric, thick slip and well-preserved and shiny glaze is typical for this type of bowls. According to Wilkinson (1973, cat. nos. 3.4; 12), a wave-and-dot



pattern on a bowl indicates a manufacture in Nishapur rather than Afrasiyab. Grube 1994b, cat. no. 64: identical pattern in red and black on white. Unregistered sherds from bowls of similar appearance show in one case a frieze with serrated leaves, framed by dots and horizontal lines, and one less well preserved and more sloppily made with running colour:



Cat. No. SP18

HNM 89.049
 Bowl, Khorasan, 10th CE
 Earthenware (orange-red); wheelmade
 Treatment i/s & o/s: slip (white)/transparent glaze (colourless, yellowish tinge)
 Decoration i/s: slip-painted (black)
 Size (cm): d. (rim) 18
 Fragmented bowl with conical sides and round rim. The painted decoration consists of a band of small, solid hanging triangles along the rim with two fine concentric lines below. In the middle of the wall, a dotted rosette is preserved. The outside is only partially slipped and glazed.



Unlike the previous examples, which show continuous patterns, another typical feature of this group is a decoration with short and intermittent decorated zones, mostly narrow bands of solid elements bordered by fine bands, elaborated with dots, zigzag or saw-tooth patterns. The latter frame the designs and give them a 'label-like' appearance. The gap in between enhances the colour effect of the pattern on the white background. For the pattern see e.g. Wilkinson 1973, cat. no. 3.4. - Kalterer 1995, Fig. 240.

Unregistered sherds with similar patterns:



Cat. No. SP19

HNM 89.106
 Bowl, Khorasan, 10th CE
 Earthenware (orange-buff); wheelmade
 Treatment i/s & o/s: slip (white)/transparent glaze (colourless)
 Decoration i/s: slip-painted (black)
 Size (cm): h. 8; d. (rim) 15.5; d. (base) 4.5



Small fragmented bowl with pointed rim, carination at the flat disc base. Painted decoration in blackish brown on white. Three dotted lines starting in the centre end up in a triangle consisting of diagonal lines, the outmost ones also show additional decorations of sets of three dots, evoking a plant-like impression, similar to the less abstract decoration on cat. no. SP20. The outside is slipped and glazed on the upper third. The glaze is poorly preserved. A similar pattern, but composed of only two opposing elements, is published by Soustiel 1985, cat. no. 56, and attributed to Samarqand, 10th century.

Cat. No. SP20

HNM 89.092
 Bowl, Khorasan, 10th CE
 Earthenware (red); wheelmade
 Treatment i/s & o/s: slip (white)/transparent glaze (colourless)
 Decoration i/s: slip-painted (black, red)

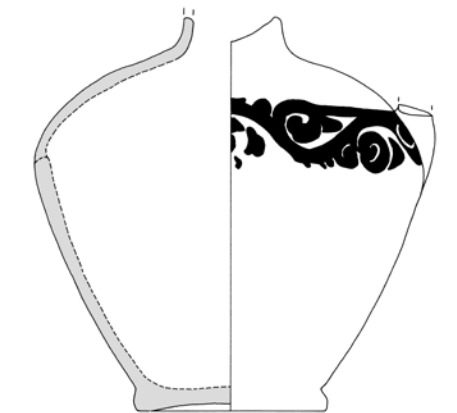


Size (cm): h. 4; d. (rim) 11.5; d. (base) 4.5
 Small fragmented bowl with conical wall and carination at the low, flat disc base. The decoration consists of a perpendicular axis, painted in red with two identical compositions consisting of three open circles and intermittent dots in dark brown. The outside is completely slipped and glazed up to the base. The glaze is poorly preserved.



Cat. No. SP21

HNM 04.34.86
 Jar, Khorasan, 10th - 12th CE
 Earthenware (reddish); wheelmade, trimmed
 Treatment i/s & o/s: slip (white)/transparent glaze (colourless)
 Decoration o/s: slip-painted (manganese black)



Size (cm): h. 15.2; d. (max.) 15; d. (base) 7
 Fragmented ewer with conical sides and rounded shoulder; neck and handle are missing. Flat biconical disc base, string-cut. Slip-painted decoration above the carination: a bold wavy scroll with halves of palmette leaves. The contour lines of the drawing are incised. Faint traces of the glaze are preserved on the body.

Cat. No. SP22

HNM 01.44.86d
 Jug, Khorasan, 10th–11th CE
 Earthenware (gritty reddish); wheelmade
 Treatment i/s & o/s: slip (white)/transparent glaze (colourless)
 Decoration o/s: slip-painted (black)
 Size (cm): h. 9.8; d. (rim) 9.7; d. (base) 5